

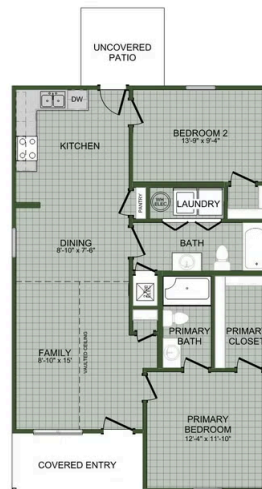
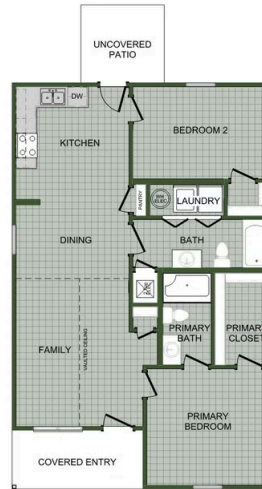


🏠 2 🚿 2 🏠 1,031 FT²

The 1050 Cottage floorplan is a 2 bed, 2 bath 1031 square feet home that offers a beautiful wide-open kitchen and living space. Gather around the spacious kitchen in your new home with friends and family. Enjoy the privacy of a secluded master suite and a sizable walk-in closet. LVP flooring throughout upgrades your home with durability and style. This plan is the definition of affordable luxury, with a modern design that suits a busy and active lifestyle.



MONA



1050C-KP