



TIMBER RIDGE
1410 Ari Ave.
Centeron, AR 72719

PRICED AT **\$399,985**  4  2.5  2  2360 FT²

The 2360-2S is our most versatile floor plan yet! With an option for a loft or a fifth bedroom, a flex space perfect for that home gym or office you've been needing, and an open concept downstairs, this home will fit any family. Check out the sky-high ceilings in the entry, drop zone coming in from the garage, and the ample storage - what's not to love!

AMENITIES



SIDEWALKS





TIMBER RIDGE
1410 Ari Ave.
Centeron, AR 72719



Monday - Saturday: 10 am-6pm
417-952-0369
schubermitchell.com

Materials, specifications, plans, designs, prices, premiums, options & sales programs may change without notice or obligation. All renderings, floor plans, and maps are artist's conception and may not depict actual buildings, fencing, walks, driveways, or landscaping.





TIMBER RIDGE
1410 Ari Ave.
Centeron, AR 72719



Monday - Saturday: 10 am-6pm
417-952-0369
schubermitchell.com

Materials, specifications, plans, designs, prices, premiums, options & sales programs may change without notice or obligation. All renderings, floor plans, and maps are artist's conception and may not depict actual buildings, fencing, walks, driveways, or landscaping.





TIMBER RIDGE
1410 Ari Ave.
Centeron, AR 72719



Monday - Saturday: 10 am-6pm
417-952-0369
schubermitchell.com

Materials, specifications, plans, designs, prices, premiums, options & sales programs may change without notice or obligation. All renderings, floor plans, and maps are artist's conception and may not depict actual buildings, fencing, walks, driveways, or landscaping.





TIMBER RIDGE
1410 Ari Ave.
Centeron, AR 72719



Monday - Saturday: 10 am-6pm
417-952-0369
schubermitchell.com

Materials, specifications, plans, designs, prices, premiums, options & sales programs may change without notice or obligation. All renderings, floor plans, and maps are artist's conception and may not depict actual buildings, fencing, walks, driveways, or landscaping.





TIMBER RIDGE
1410 Ari Ave.
Centeron, AR 72719



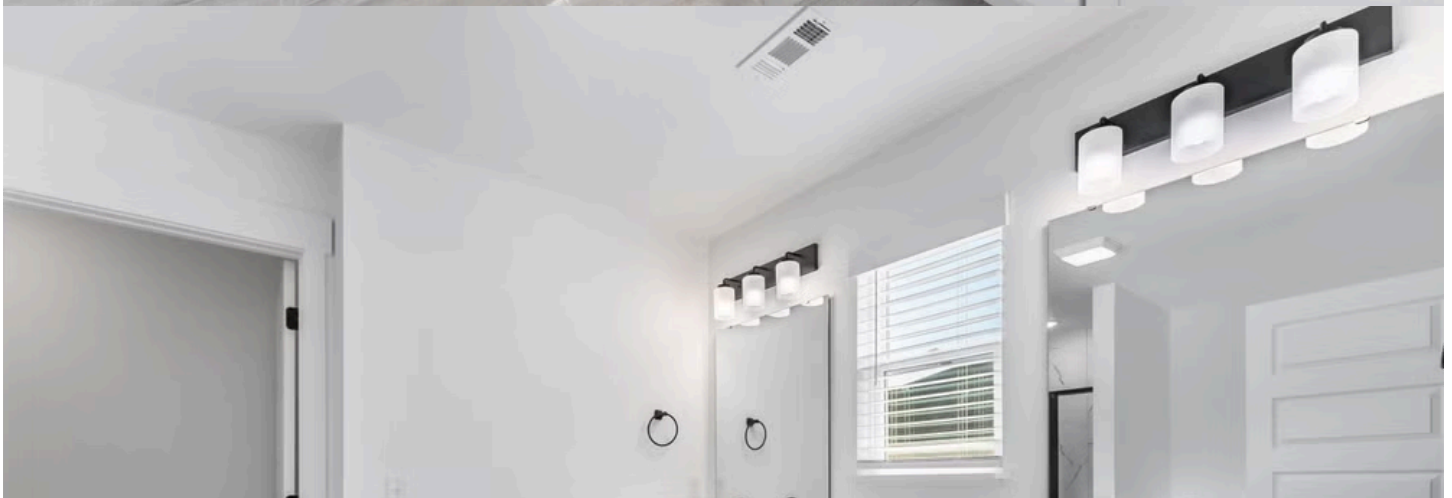
Monday - Saturday: 10 am-6pm
417-952-0369
schubermitchell.com

Materials, specifications, plans, designs, prices, premiums, options & sales programs may change without notice or obligation. All renderings, floor plans, and maps are artist's conception and may not depict actual buildings, fencing, walks, driveways, or landscaping.











TIMBER RIDGE
1410 Ari Ave.
Centeron, AR 72719

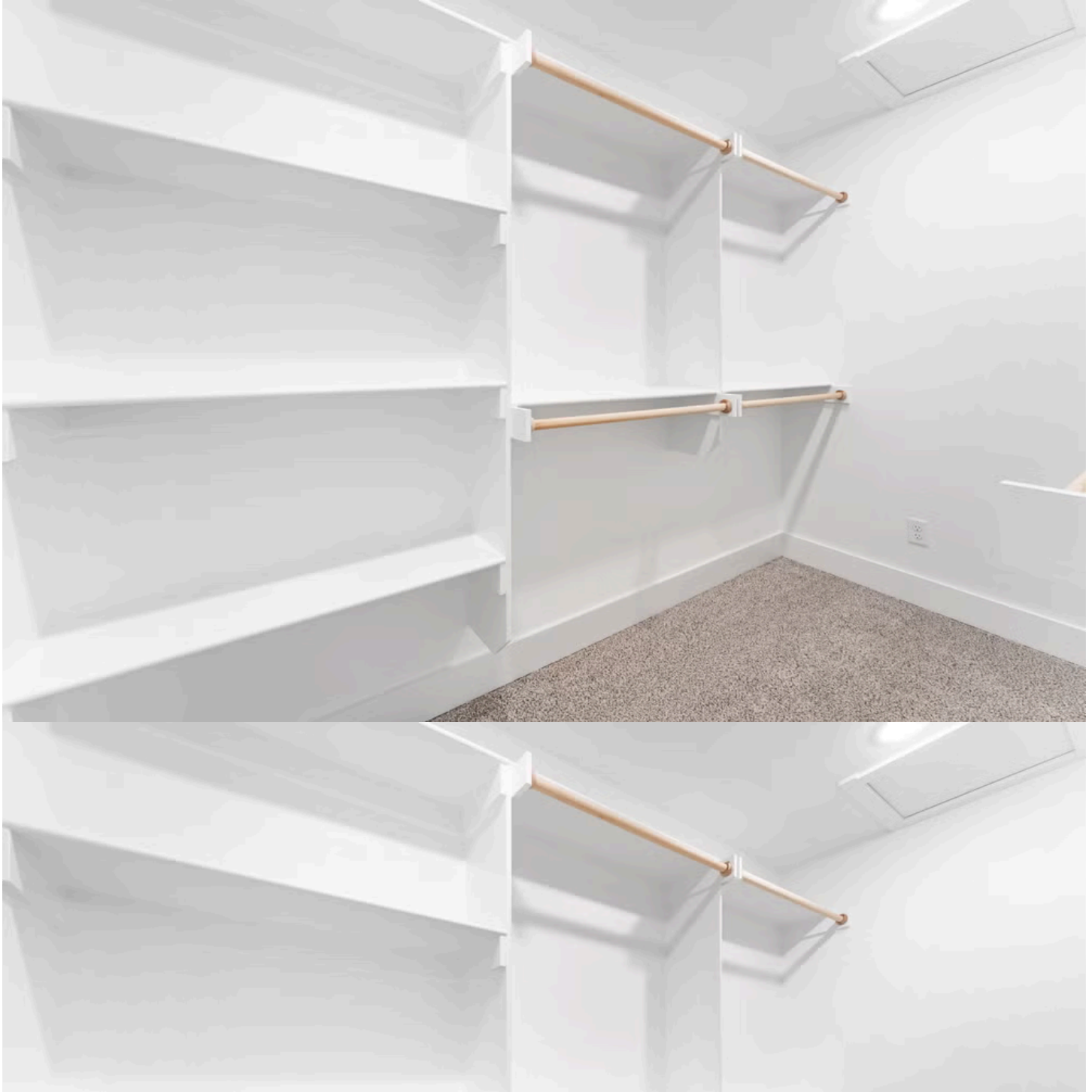


Monday - Saturday: 10 am-6pm
417-952-0369
schubermitchell.com

Materials, specifications, plans, designs, prices, premiums, options & sales programs may change without notice or obligation. All renderings, floor plans, and maps are artist's conception and may not depict actual buildings, fencing, walks, driveways, or landscaping.

























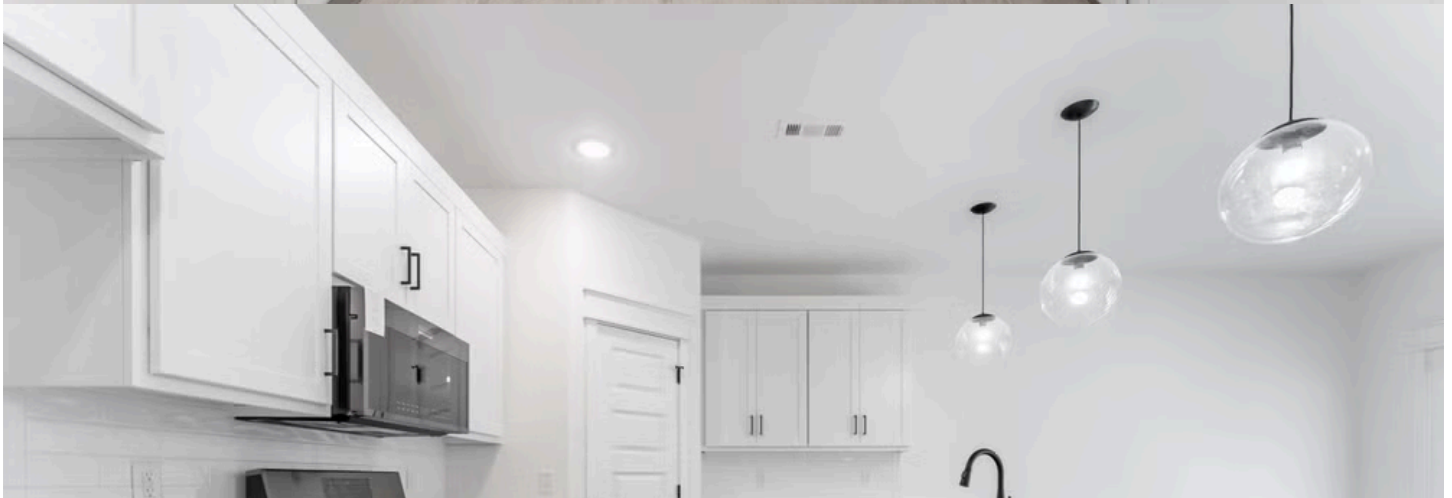


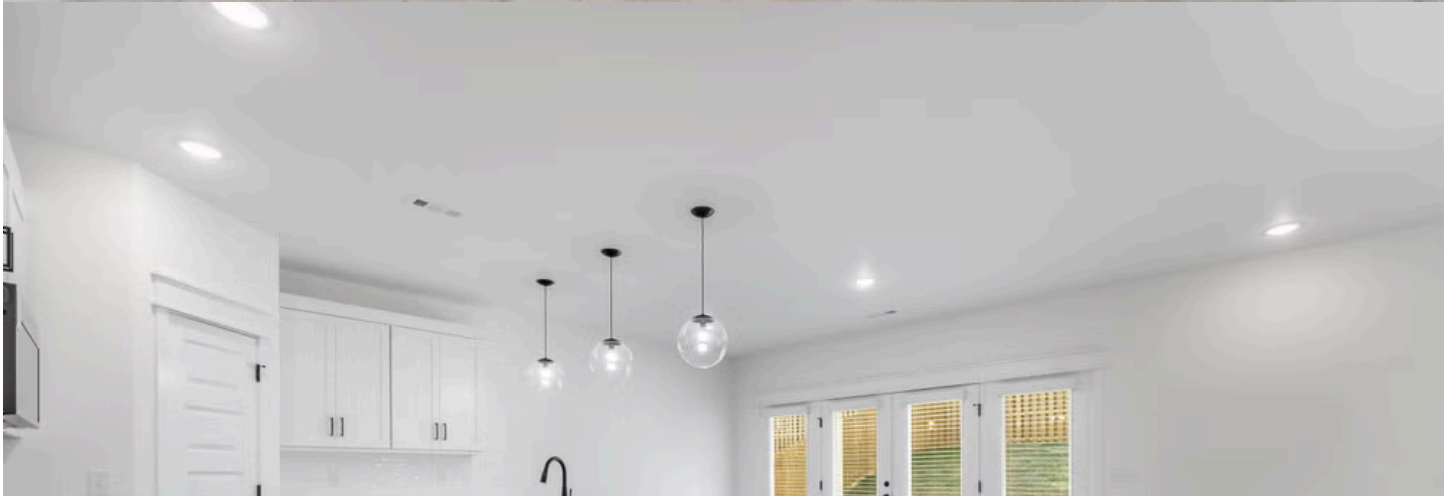
















TIMBER RIDGE
1410 Ari Ave.
Centerton, AR 72719



Monday - Saturday: 10 am-6pm
417-952-0369
schubermitchell.com

Materials, specifications, plans, designs, prices, premiums, options & sales programs may change without notice or obligation. All renderings, floor plans, and maps are artist's conception and may not depict actual buildings, fencing, walks, driveways, or landscaping.





TIMBER RIDGE
1410 Ari Ave.
Centeron, AR 72719

Monday - Saturday: 10 am-6pm
417-952-0369
schubermitchell.com

Materials, specifications, plans, designs, prices, premiums, options & sales programs may change without notice or obligation. All renderings, floor plans, and maps are artist's conception and may not depict actual buildings, fencing, walks, driveways, or landscaping.







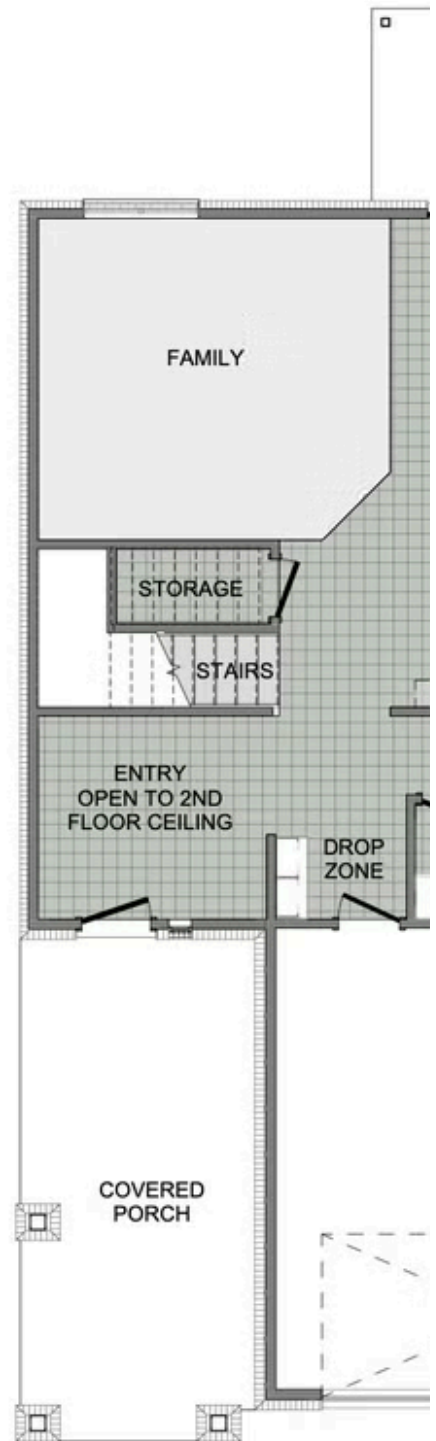
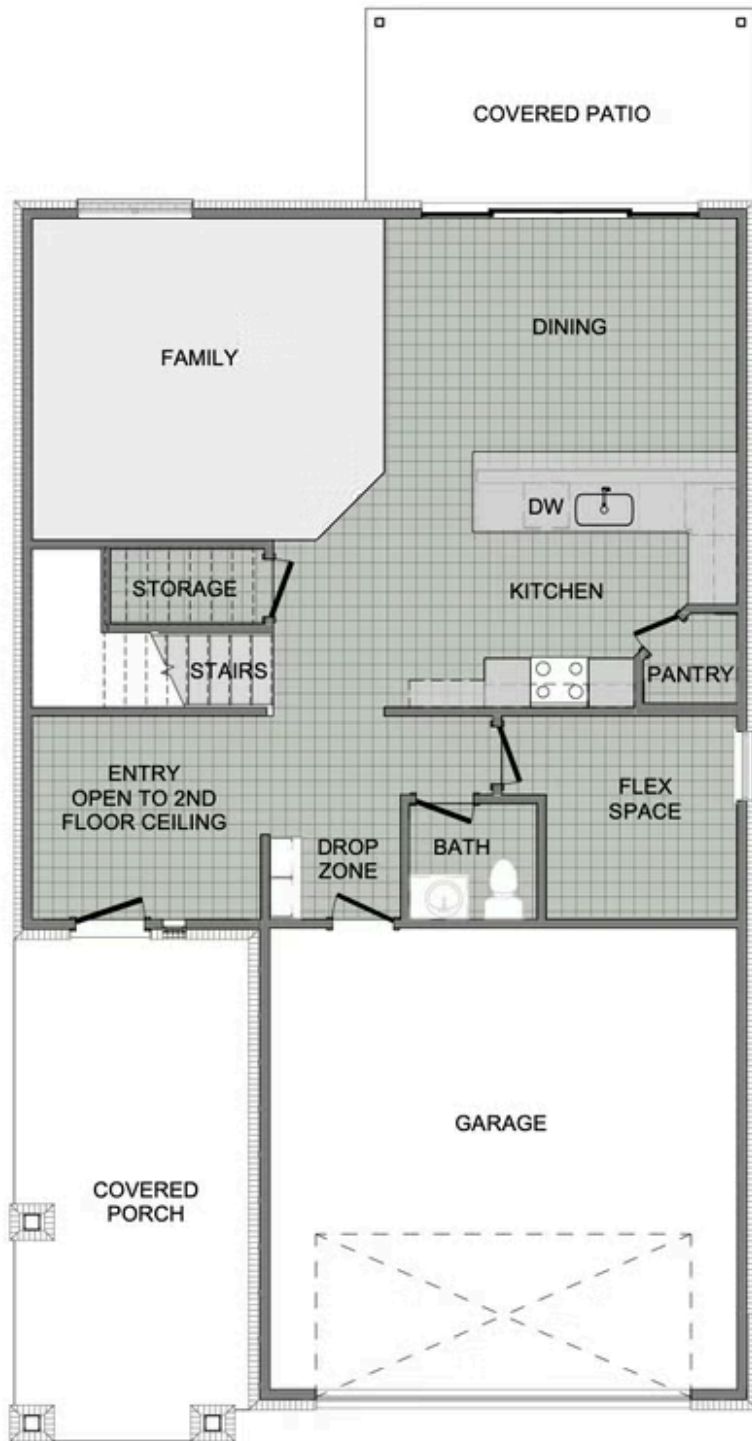
TIMBER RIDGE
1410 Ari Ave.
Centernton, AR 72719



Monday - Saturday: 10 am-6pm
417-952-0369
schubermitchell.com

Materials, specifications, plans, designs, prices, premiums, options & sales programs may change without notice or obligation. All renderings, floor plans, and maps are artist's conception and may not depict actual buildings, fencing, walks, driveways, or landscaping.





1ST FLOOR



2ND FLOOR - LOFT OPTION