



PRICED AT **\$429,112** 🛏 4 🚿 2.0 🚗 2 📏 2150 FT<sup>2</sup>

This 2150 square foot home features 4 bedrooms and 2 bathrooms. The main living area includes a large living room that flows seamlessly into a modern kitchen and dining area, creating the perfect space for entertaining guests. With its thoughtful design and practical amenities, this home is perfect for those seeking a comfortable and functional living space.

#### AMENITIES



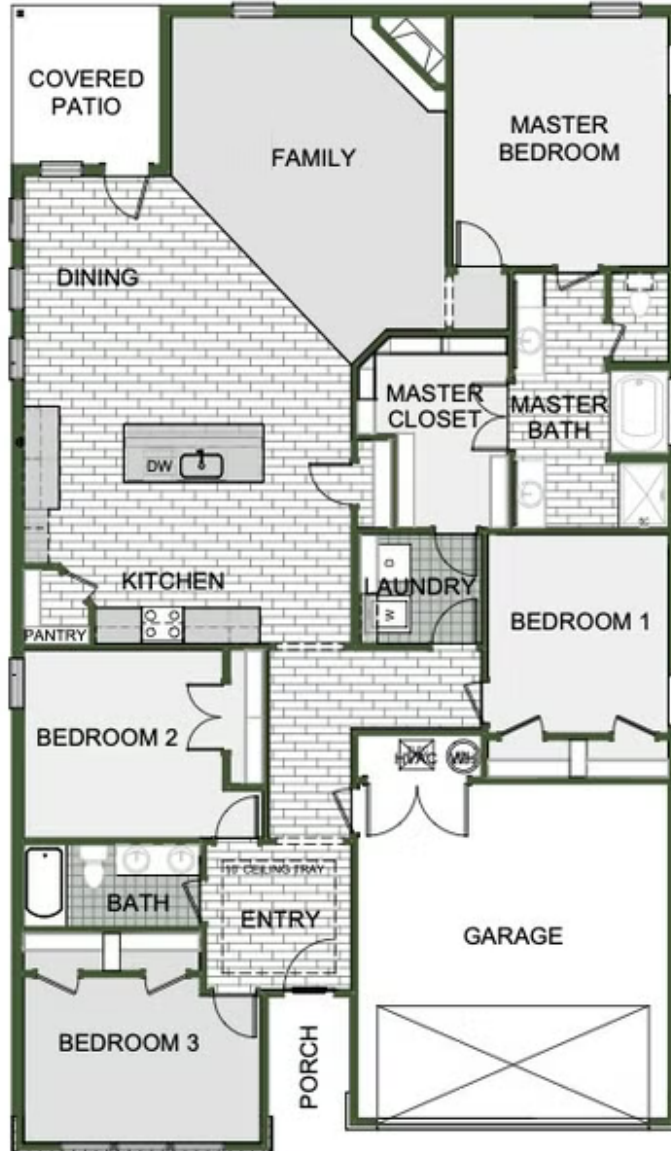
SIDEWALKS



COMMUNITY  
POND



HILLCREST SUBDIVISION  
2262 Overlook Way  
Farmington, AR 72730



Monday - Saturday: 10 am-6pm  
417-952-0369  
schubermitchell.com

Materials, specifications, plans, designs, prices, premiums, options & sales programs may change without notice or obligation. All renderings, floor plans, and maps are artist's conception and may not depict actual buildings, fencing, walks, driveways, or landscaping.

