



HILLCREST SUBDIVISION  
994 Woodbridge Dr.  
Farmington, AR 72730

PRICED AT \$481,947  4  3.0  2  2410 FT<sup>2</sup>

The 2410 Series offers a large family, dining, and kitchen area with a bar-style counter that is ideal for hosting guests. An open design layout creates a welcoming space for family time. The large primary suite offers a spacious walk-in closet, double bathroom vanities, and separate tub and shower.

### AMENITIES



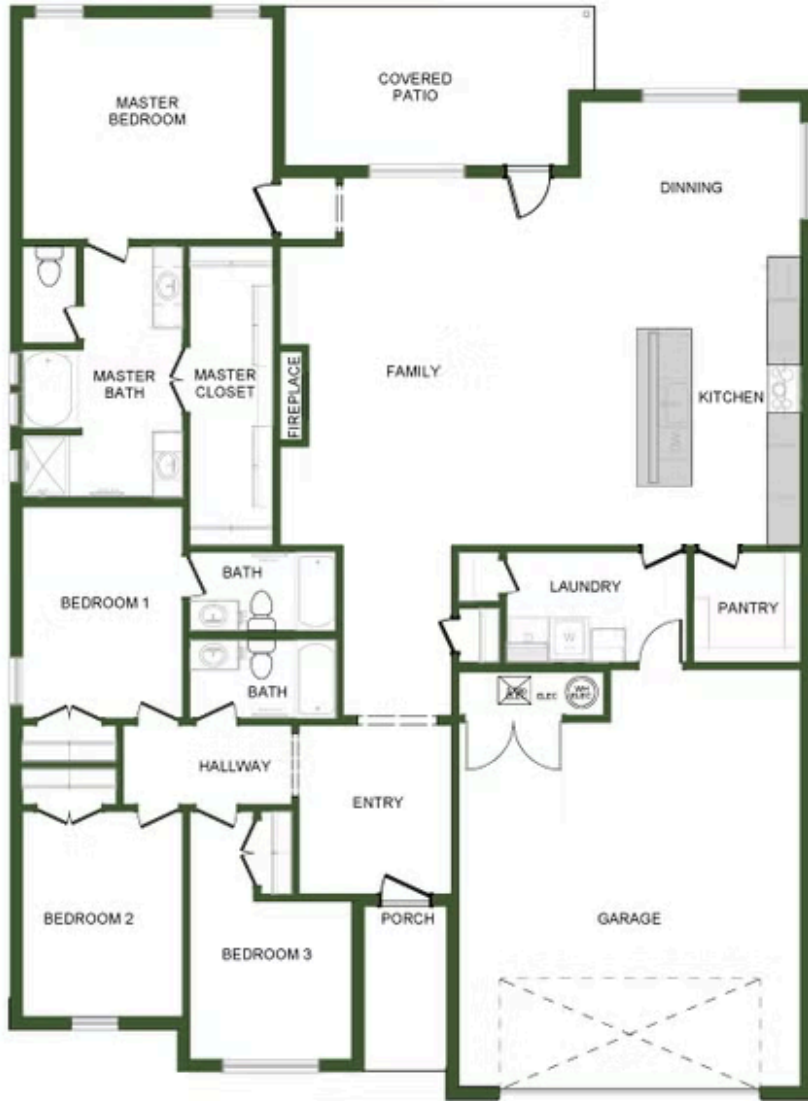
SIDEWALKS



COMMUNITY  
POND







2410