

STARTING AT **\$288,000**  4  2  2  1,729 FT<sup>2</sup>

This 4 bed, 2 bath 1729 square foot floor plan is ready to be filled with your family and friends! Connect with nature in this floor plan thanks to the cozy covered back patio just off the open concept family, dining, and kitchen area. Available space is truly maximized in this home with a kitchen pantry and dedicated laundry space, just off the oversized primary suite ...

### AMENITIES



SIDEWALKS



COMMUNITY  
POND



RURAL  
DEVELOPMENT  
FINANCING

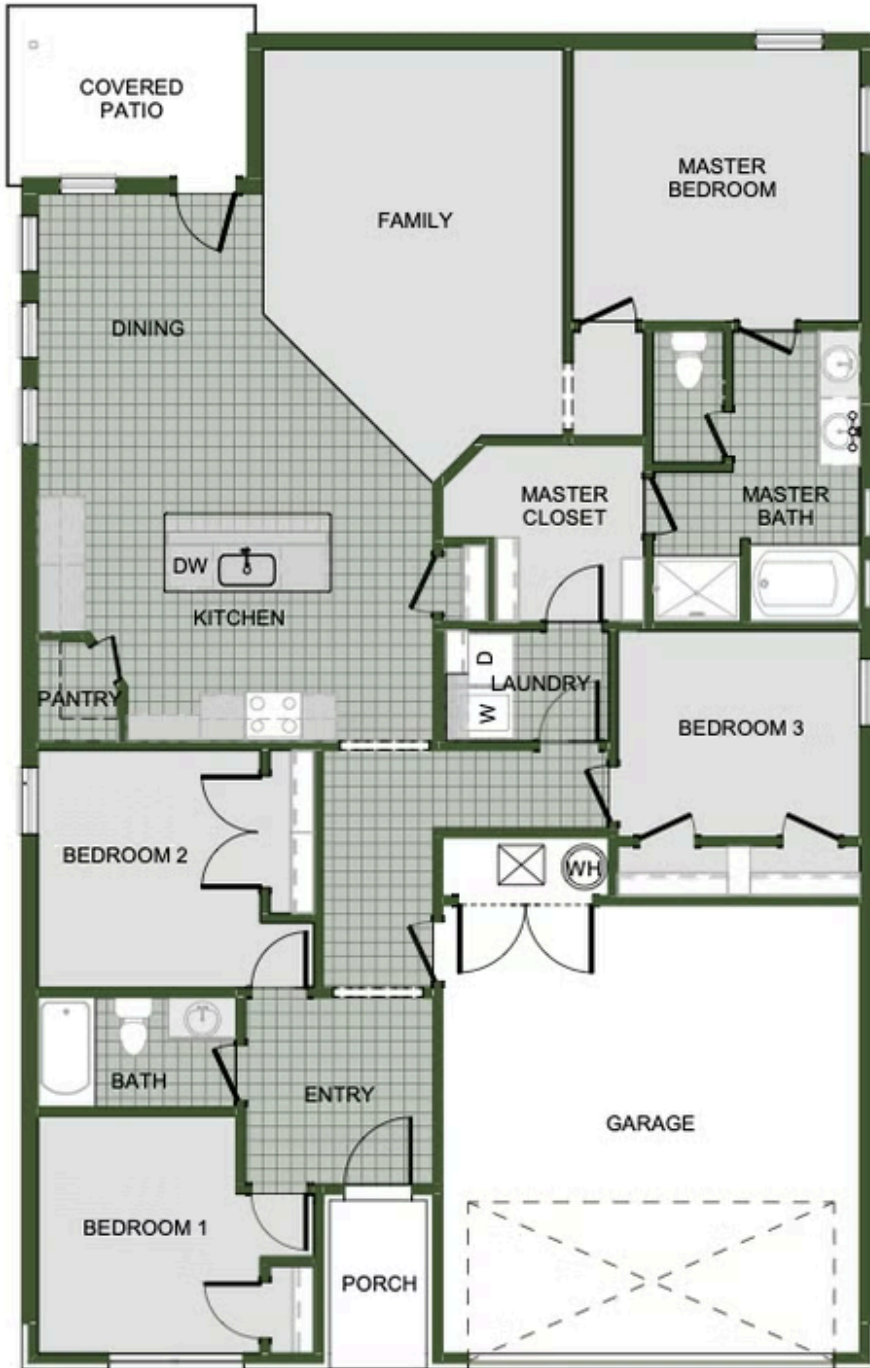


GREENSPACE



PROXIMITY  
TO PARK





1729-4