



PRICED AT **\$339,527** 🛏️ 4 🚿 2.0 🚗 2 🏠 1950 FT²

This 1950 square foot home features a spacious and open floor plan. The main living area includes a large living room that flows seamlessly into a modern kitchen and dining area, creating the perfect space for entertaining guests. The home includes four bedrooms and two full bathrooms. With its thoughtful design and practical amenities, this home is perfect for those...

AMENITIES



SIDEWALKS



COMMUNITY
POND



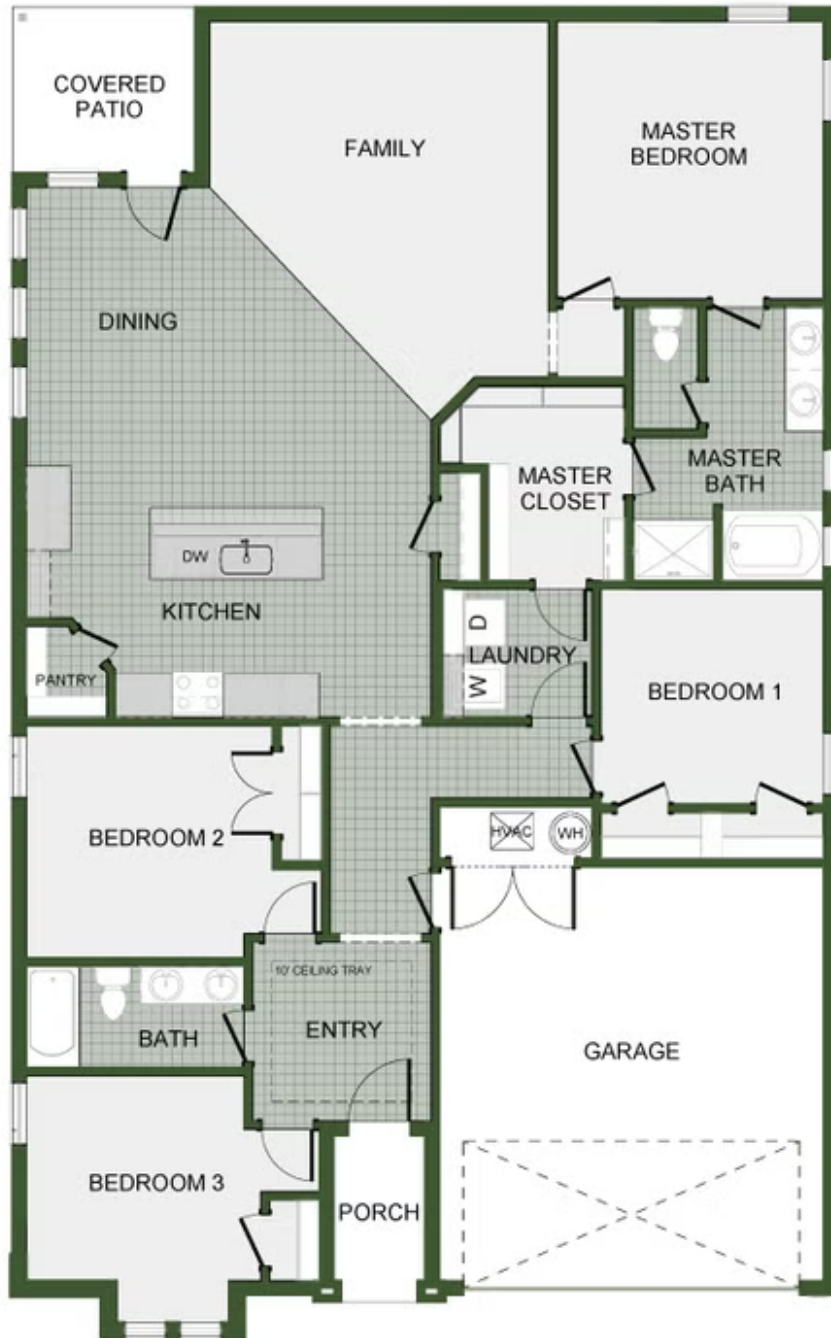
RURAL
DEVELOPMENT FINANCING



GREENSPACE



PROXIMITY
TO PARK



1950-4