



STARTING AT **\$360,000** 🛏 4 - 5 🚿 2.5 🚗 2 📏 2,360 FT²

This floor plan boasts 2360 square feet, 4-5 bedrooms, 2.5 bathrooms. This is one of the most versatile floor plans yet! With an option for a loft or a fifth bedroom, a flex space perfect for that home gym or office you've been needing, and an open concept downstairs, this home will fit any family. Check out the sky-high ceilings in the entry, the drop zone coming in fr...

AMENITIES



SIDEWALKS



COMMUNITY
POND



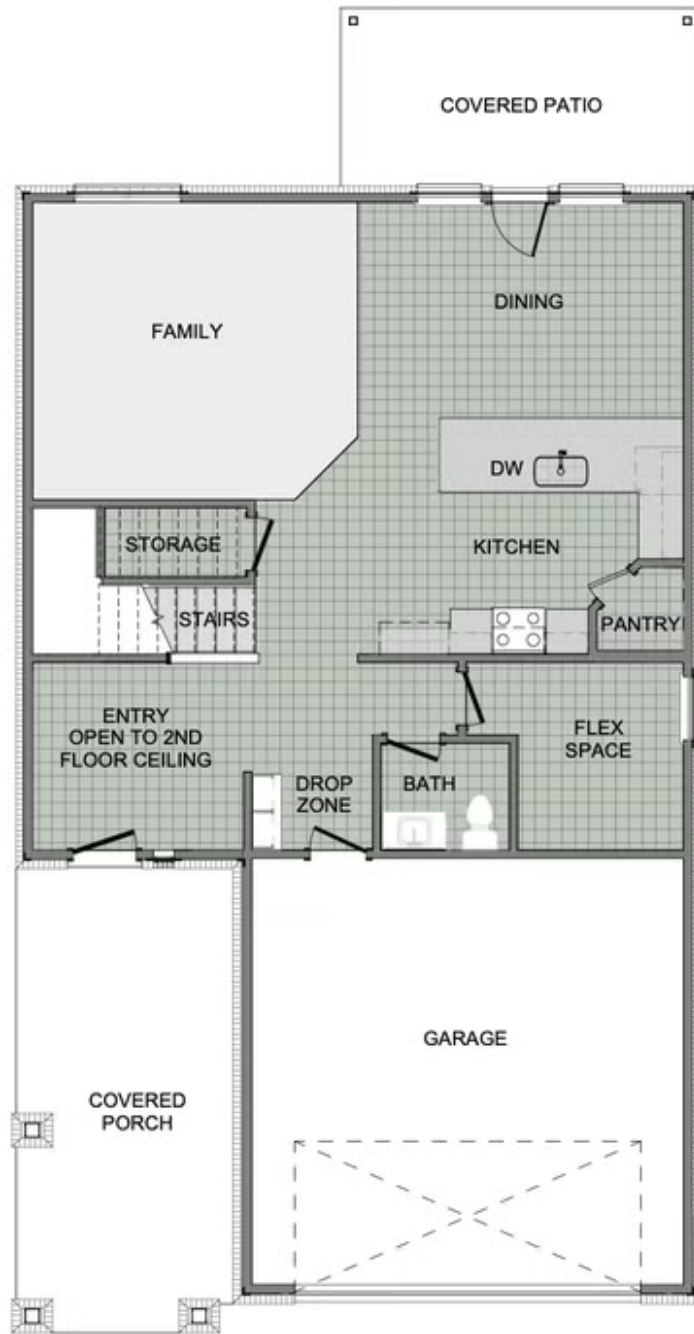
RURAL
DEVELOPMENT FINANCING

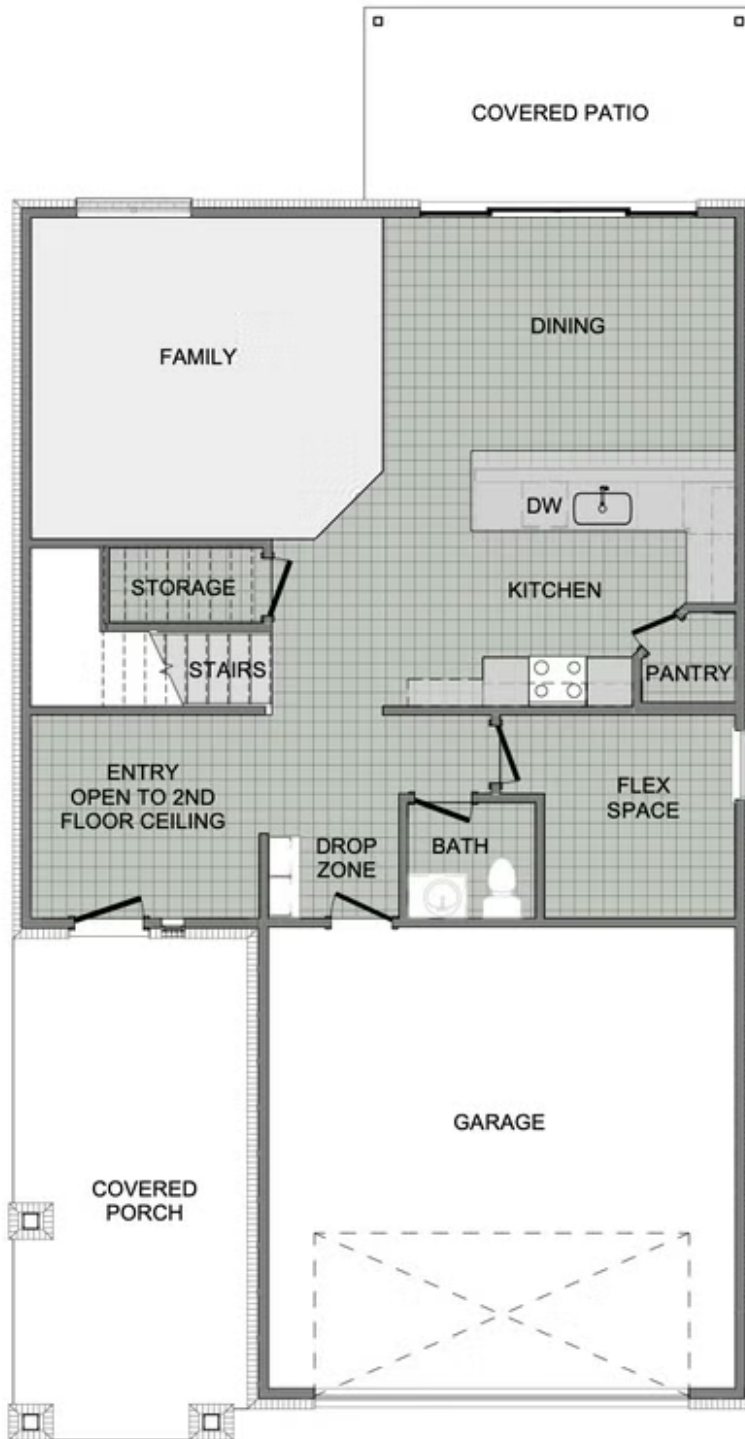


GREENSPACE



PROXIMITY
TO PARK





1ST FLOOR



2ND FLOOR - LOFT OPTION



2ND FLOOR - 5 BED OPTION