



CASTLEWOOD
1750 3-Car
Floor Plan

STARTING AT **\$318,000** 🛏️ 3 - 4 🚿 2 🚗 3 🏠 1,750 FT²

This

Monday - Saturday: 10 am-6pm

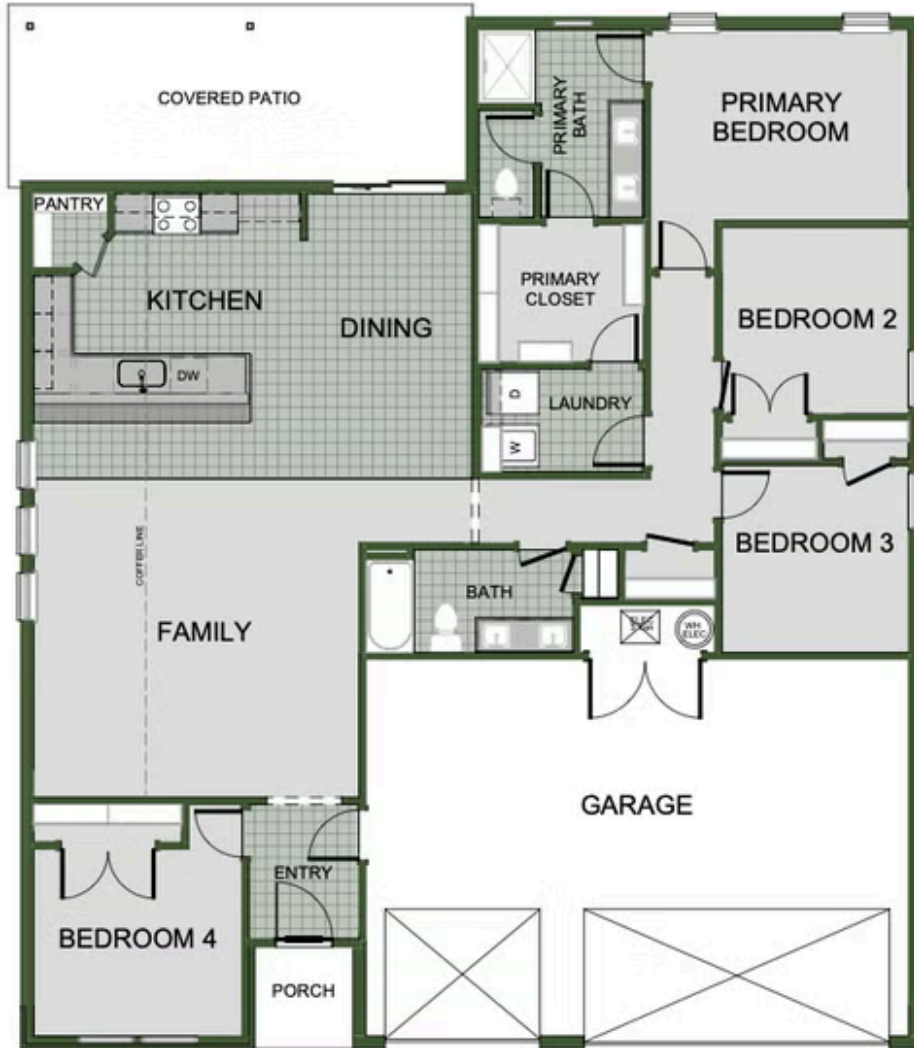
417-952-0369

schubermitchell.com

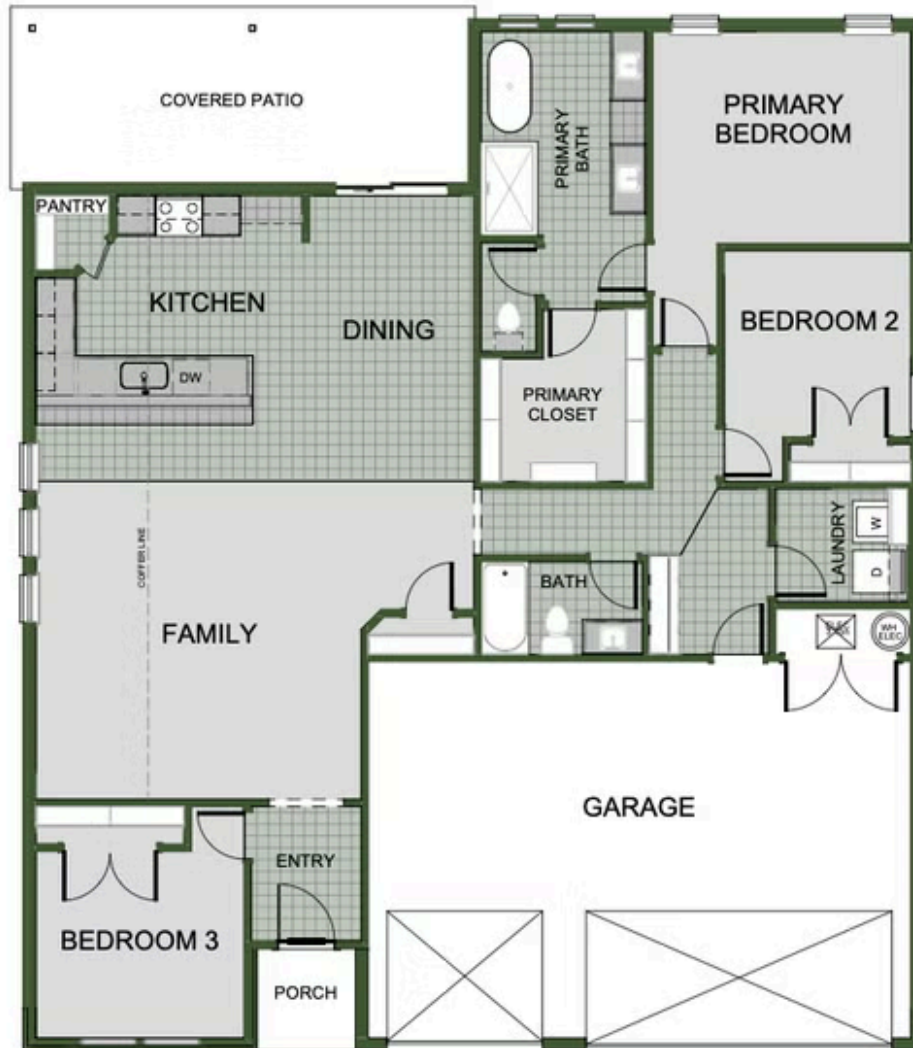
Materials, specifications, plans, designs, prices, premiums, options & sales programs may change without notice or obligation. All renderings, floor plans, and maps are artist's conception and may not depict actual buildings, fencing, walks, driveways, or landscaping.



**EQUAL HOUSING
OPPORTUNITY**



4 BEDROOM



3 BEDROOM