



CASTLEWOOD  
3501 N. Wiley Dr.  
Siloam Springs, AR 72761

PRICED AT \$332,522  3  2.0  3  1750 FT<sup>2</sup>

This

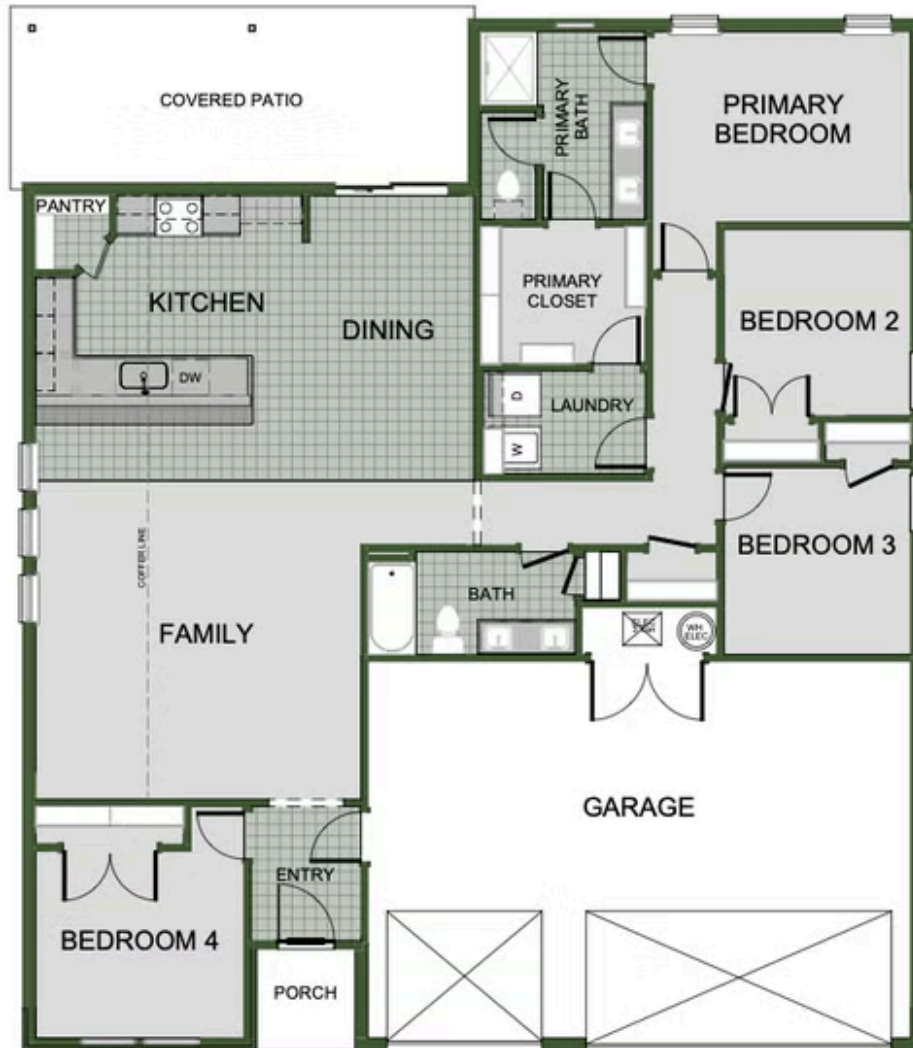
Monday - Saturday: 10 am-6pm  
417-952-0369  
schubermitchell.com

Materials, specifications, plans, designs, prices, premiums, options & sales programs may change without notice or obligation. All renderings, floor plans, and maps are artist's conception and may not depict actual buildings, fencing, walks, driveways, or landscaping.

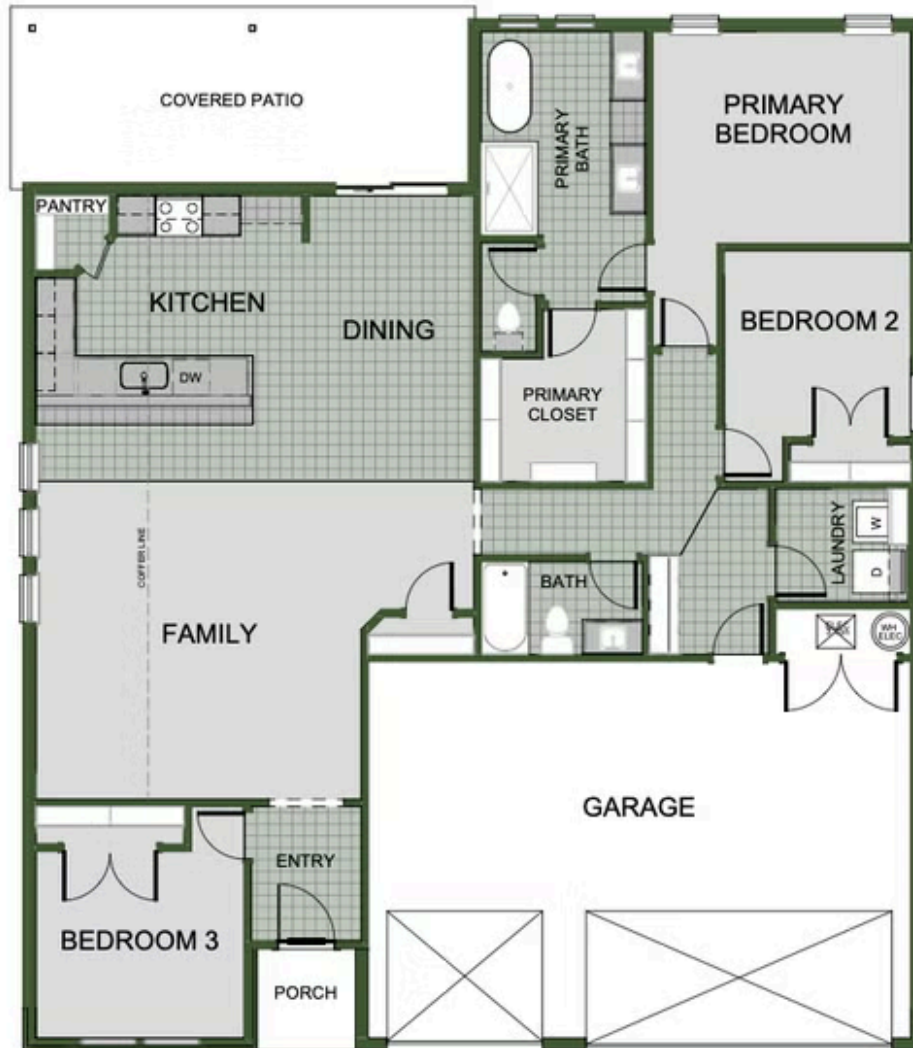


**EQUAL HOUSING  
OPPORTUNITY**





4 BEDROOM



3 BEDROOM