

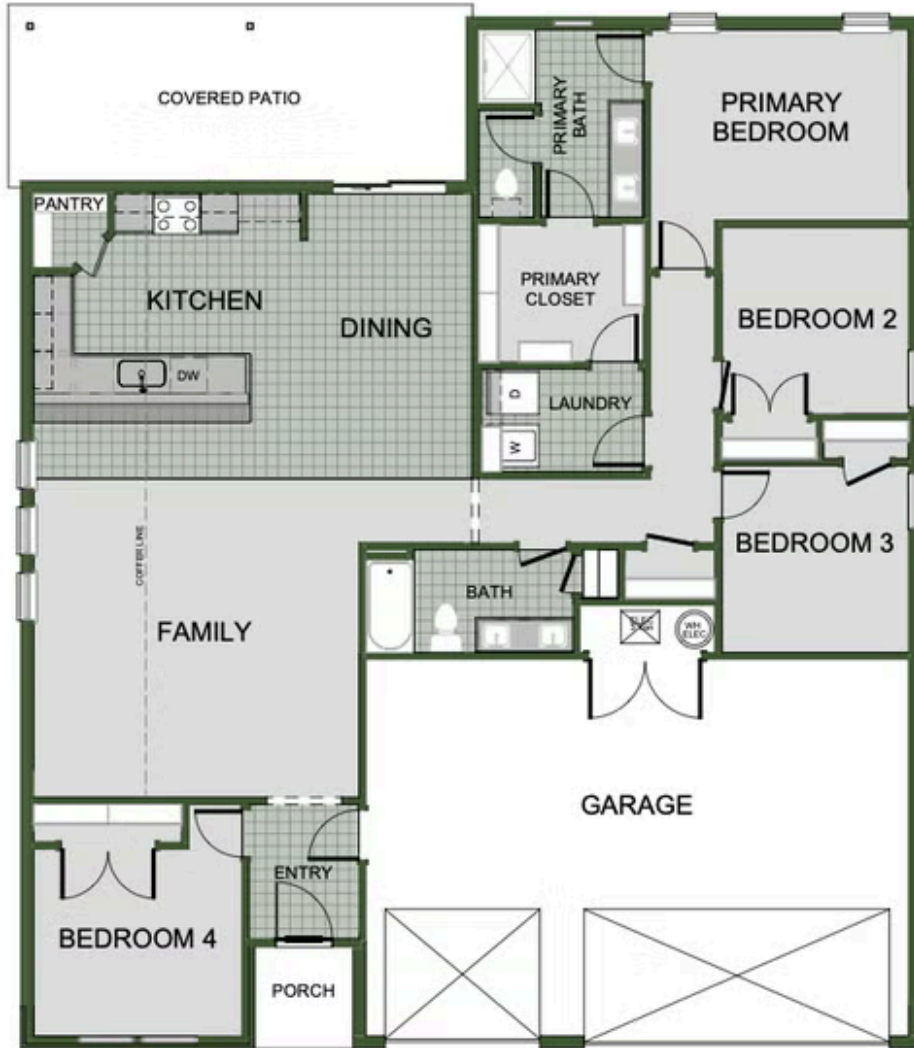


CASTLEWOOD
1750-4 3-Car
Floor Plan

STARTING AT **\$315,000**  4  2  3  1,750 FT²

We're thrilled to introduce the stunning 1750-4 3-Car Series, a versatile and luxurious 3-4 bedroom, 2-bathroom home that perfectly blends elegance and functionality. Spanning 1750 square feet, this home features impressive 10-foot ceilings in the entryway, kitchen, living area, and primary bedroom, creating an airy and spacious ambiance throughout.

Step inside...



4TH BEDROOM