



RAINER FARMS
1750 3-Car
Floor Plan

STARTING AT **\$274,000** 3 - 4 2 3 1,750 FT²

1750 3 Car : This floor plan is a 3-4 bedroom, 2-bathroom 1750 square feet home featuring 10-foot ceilings in the entryway, kitchen, living area, and primary bedroom, plus dual vanities in the primary bathroom. The 1750 3-Car Series delivers the luxury of a larger floor plan with an included 3rd car garage. Enjoy the flexible floor plan with the choice of 3 or 4 bedroom...

AMENITIES



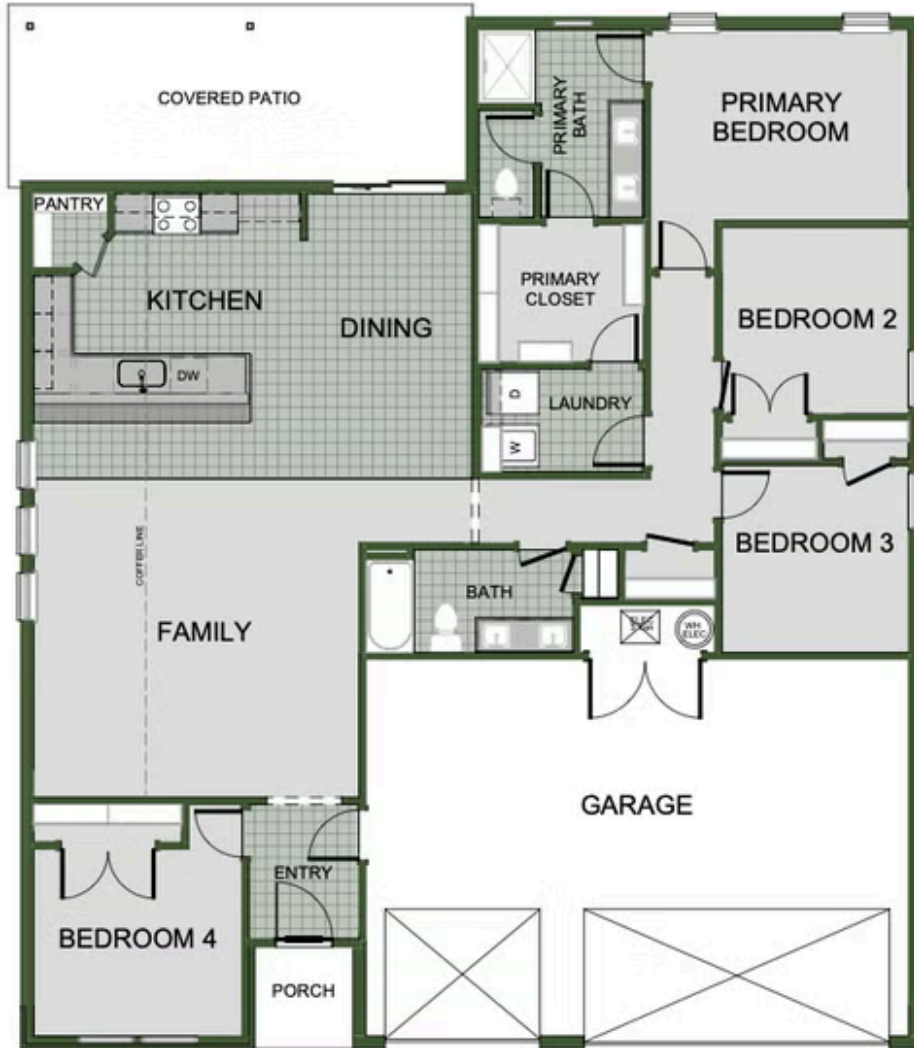
SIDEWALKS



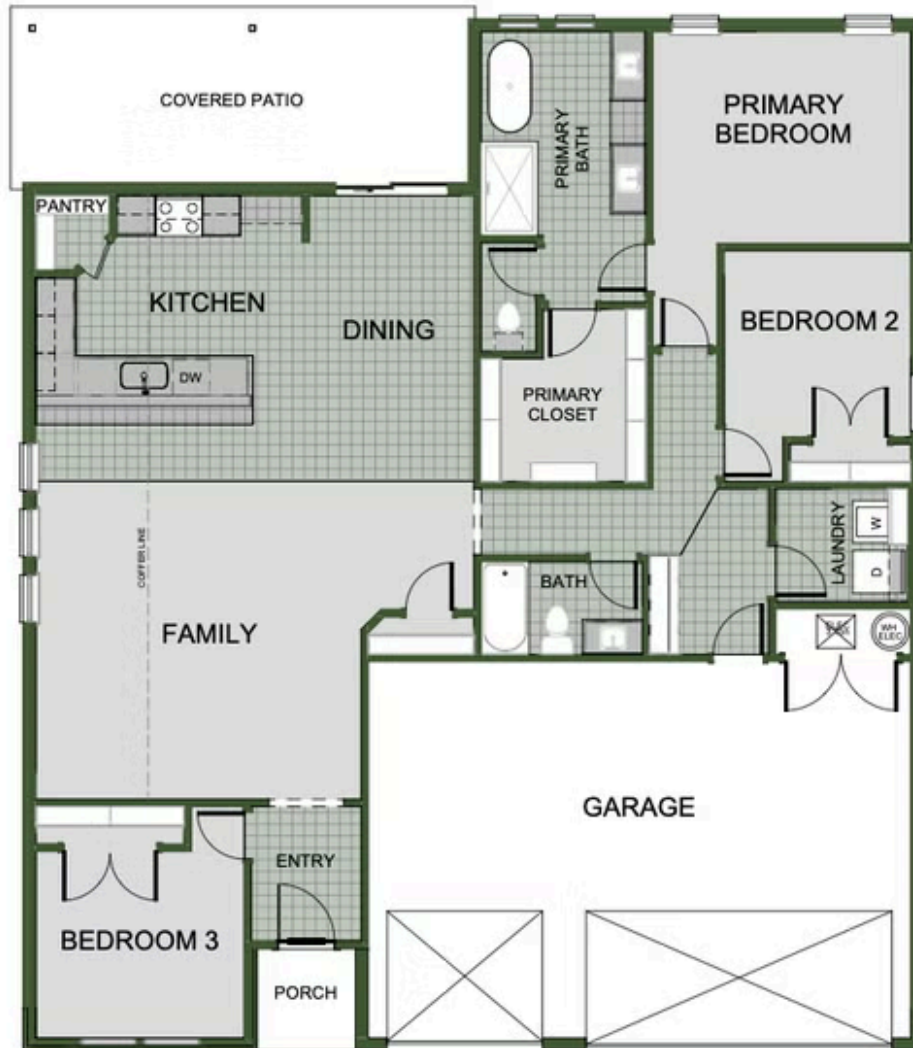
WALKING
TRAIL



GOLF CART
COMMUNITY



4 BEDROOM



3 BEDROOM