



CREEKSIDE  
1950-4  
Floor Plan

STARTING AT \$274,000 4 2 2 1,950 FT<sup>2</sup>

This 1950 square foot 4 bedroom, 2 bathroom home features a spacious and open floor plan. The main living area includes a large living room that flows seamlessly into a modern kitchen and dining area, creating the perfect space for entertaining guests. The home includes four bedrooms and two full bathrooms. With its thoughtful design and practical amenities, this home i...

### AMENITIES



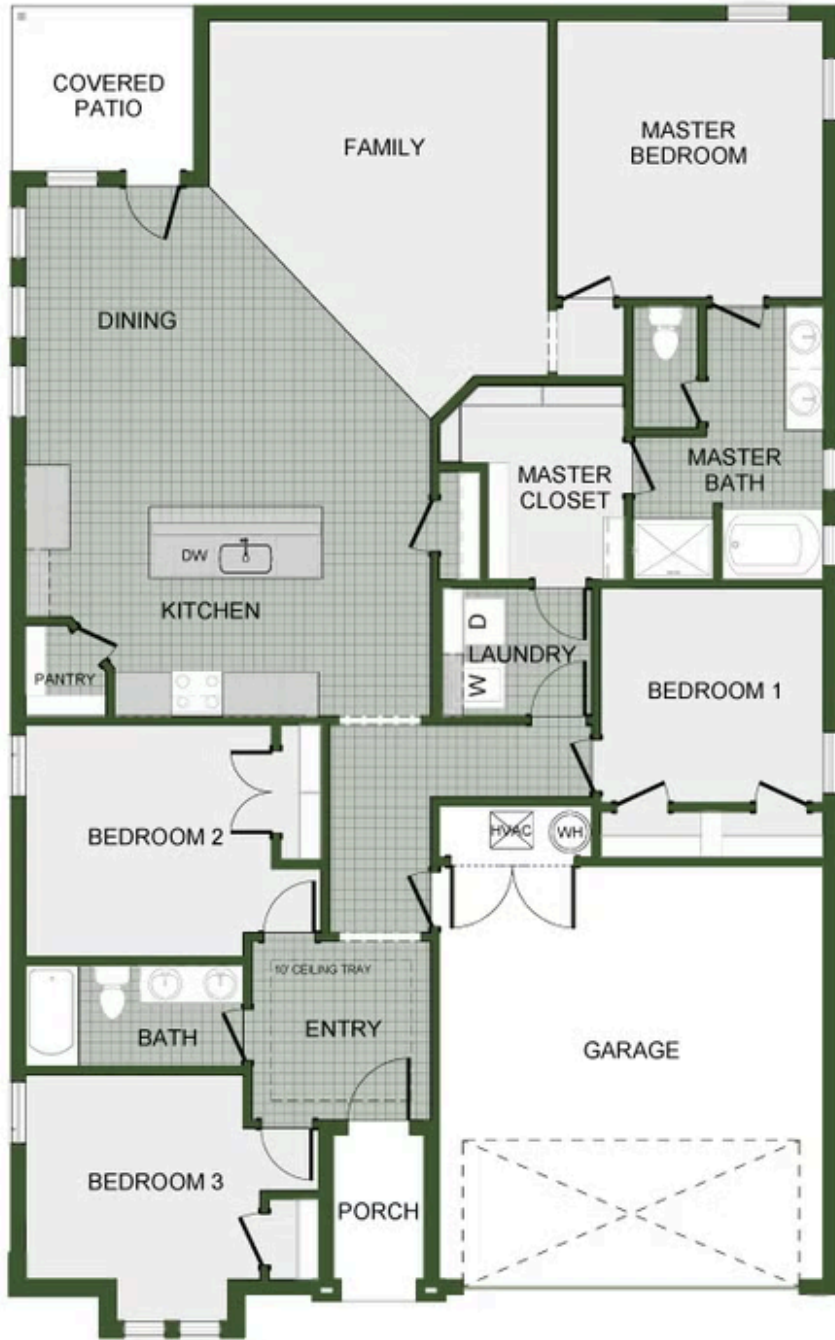
SIDEWALKS



RURAL  
DEVELOPMENT FINANCING  
GREENSPACE







1950-4