



SOUTHWIND TRAIL

116 Eagle Edge Ave.

Duenweg, MO 64841

PRICED AT \$212,544 3 2.0 2 1180 FT<sup>2</sup>

The 1100 Cottage is a 3 bed, 2 bath 1100 square foot floor plan that offers a beautiful wide-open kitchen and living space. Gather around the spacious kitchen island with friends and family in your new home. LVP flooring throughout upgrades your home with durability and style. Enjoy the privacy of a secluded primary suite and a sizable walk- in closet. This floor plan i...

### AMENITIES



SIDEWALKS



COMMUNITY  
POND



RURAL  
DEVELOPMENT FINANCING



GREENSPACE

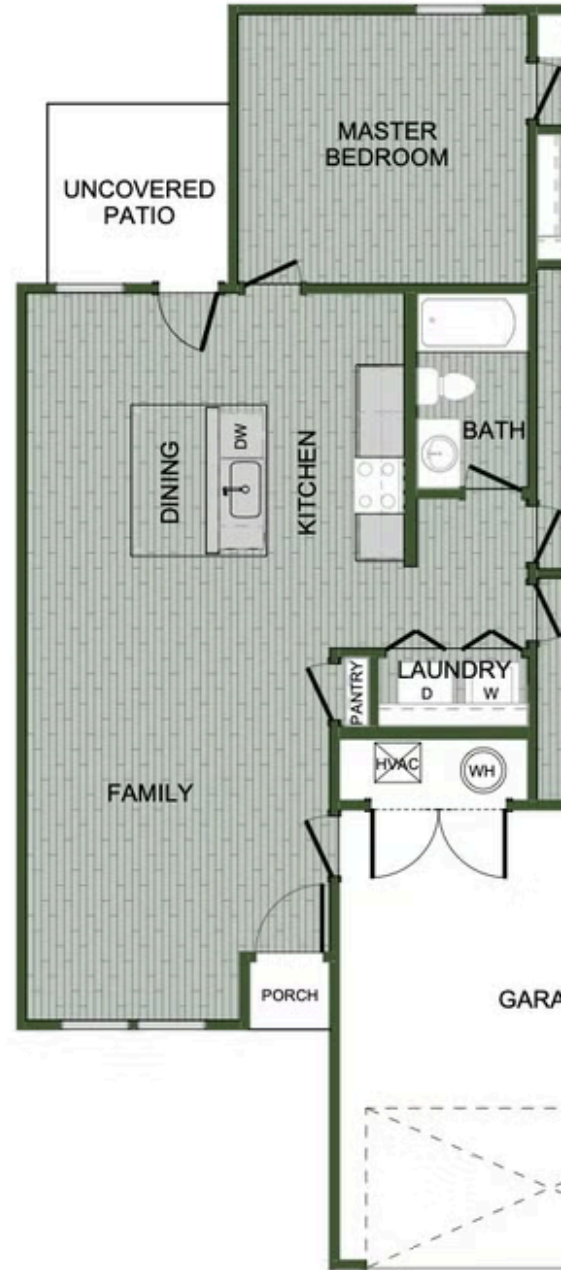
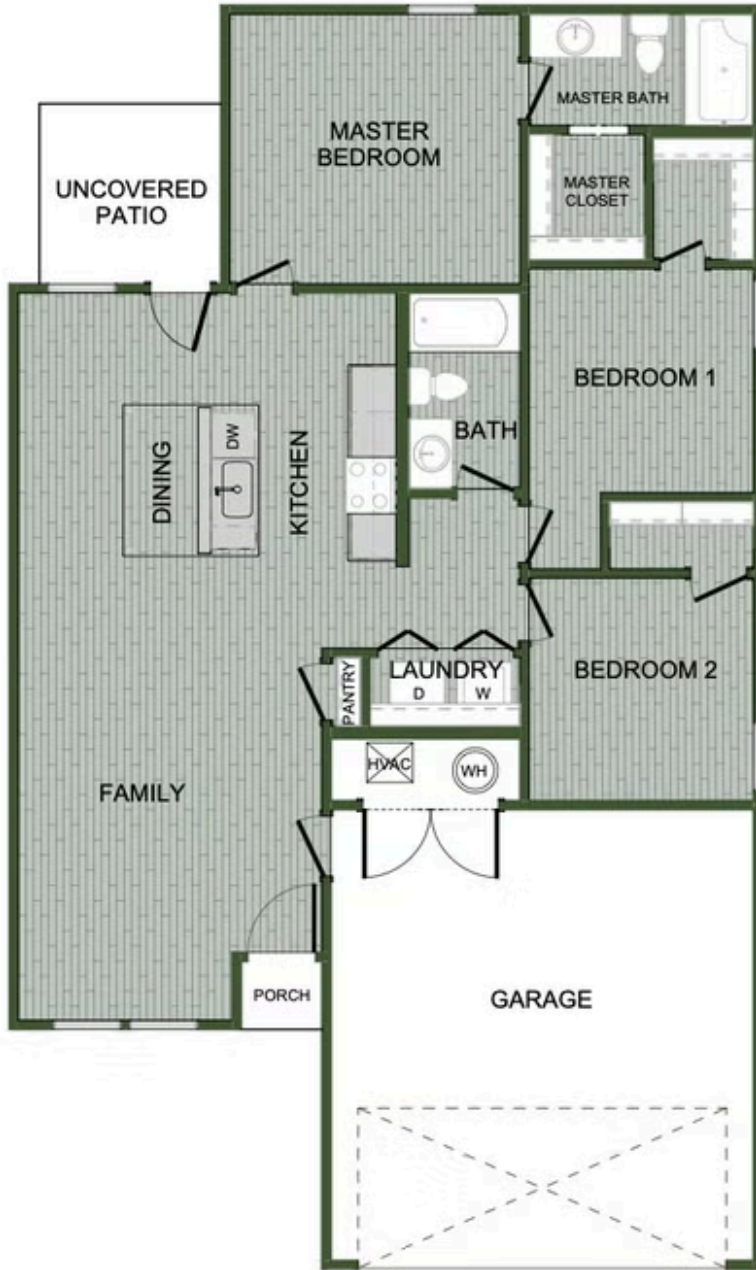


WALKING  
TRAIL



PARK





1100 COTTAGE