



SOUTHWIND TRAIL
214 Eagle Edge Ave.
Duenweg, MO 64841

PRICED AT \$212,110 3 2.0 2 1180 FT²

This Cottage Collection plan offers a beautiful wide-open kitchen and living space. Gather around the spacious kitchen island with friends and family. Enjoy the privacy of a secluded primary suite and a sizable walk-in closet. This 3 bedroom, 2 bathroom plan is the definition of affordable luxury, with a modern design that suits a busy and active lifestyle.

AMENITIES



SIDEWALKS



COMMUNITY
POND



RURAL
DEVELOPMENT FINANCING



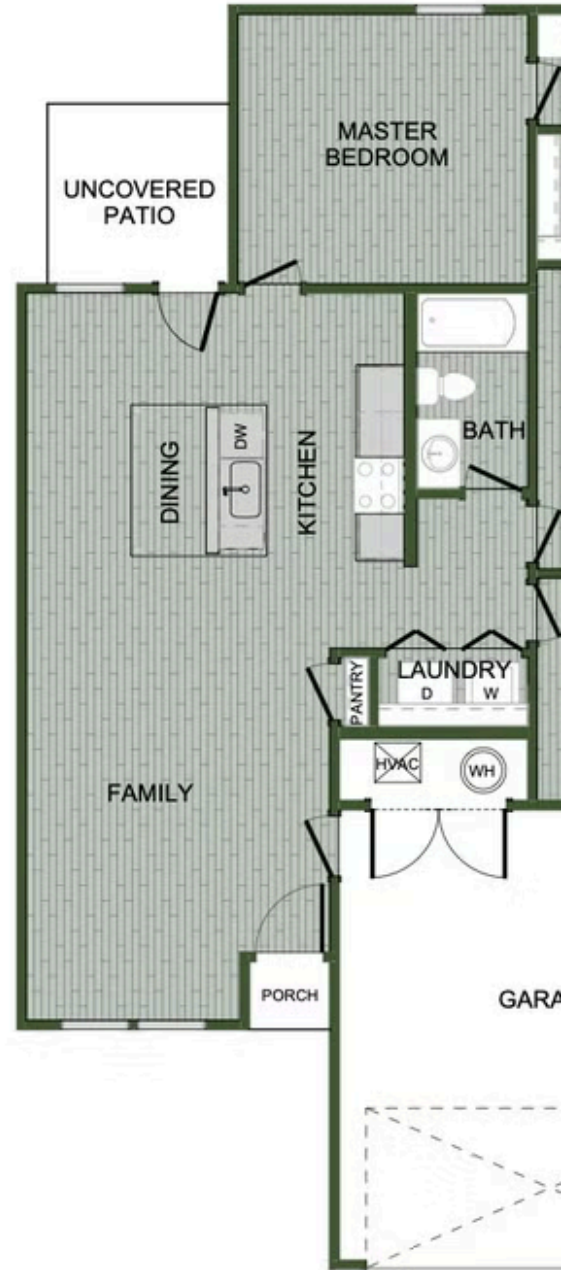
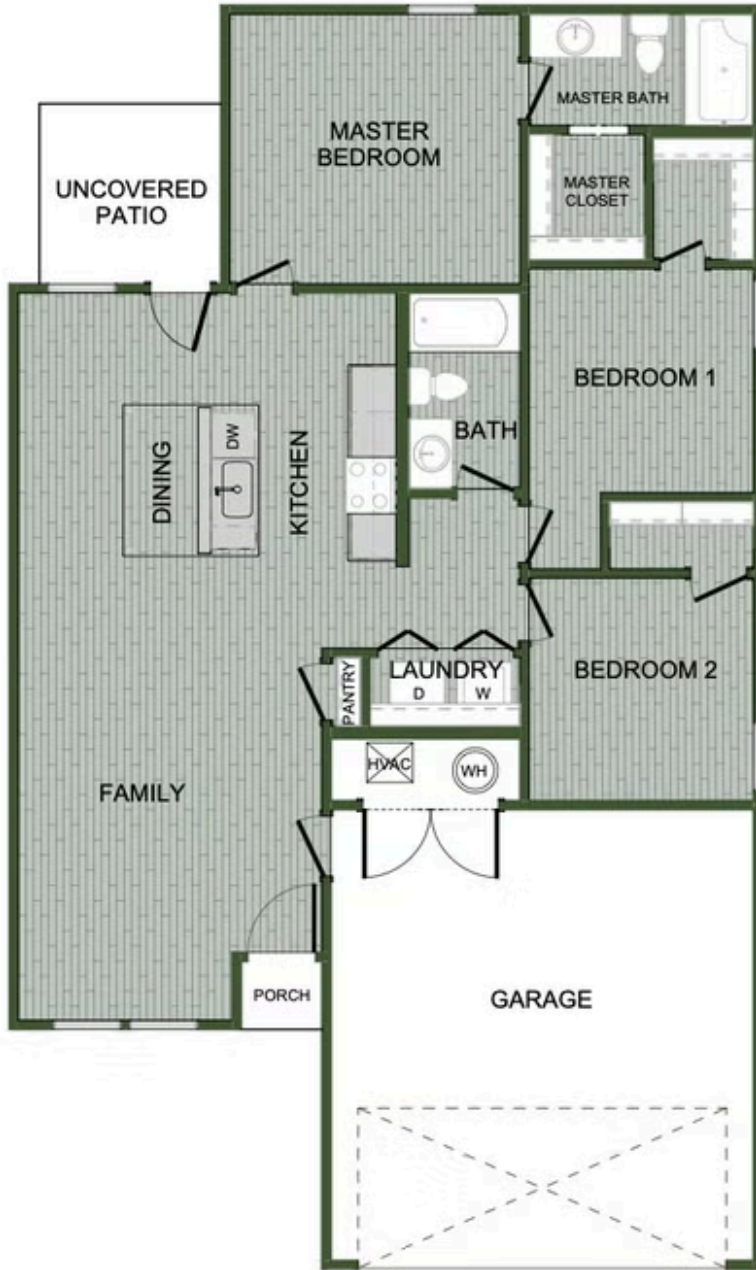
GREENSPACE



WALKING
TRAIL



PARK



1100 COTTAGE