



SOUTHWIND TRAIL  
**320 Molly Dean Dr.**  
Duenweg, MO 64841

PRICED AT **\$290,701** 🛏️ 3 🚿 2.0 🚗 3 📏 1750 FT<sup>2</sup>

1750 3 Car : This floor plan is a 3-4 bedroom, 2-bathroom 1750 square feet home featuring 10-foot ceilings in the entryway, kitchen, living area, and primary bedroom, plus dual vanities in the primary bathroom. The 1750 3-Car Series delivers the luxury of a larger floor plan with an included 3rd car garage. Enjoy the flexible floor plan with the choice of 3 or 4 bedroom...

### AMENITIES



SIDEWALKS



COMMUNITY  
POND



RURAL  
DEVELOPMENT  
FINANCING



GREENSPACE

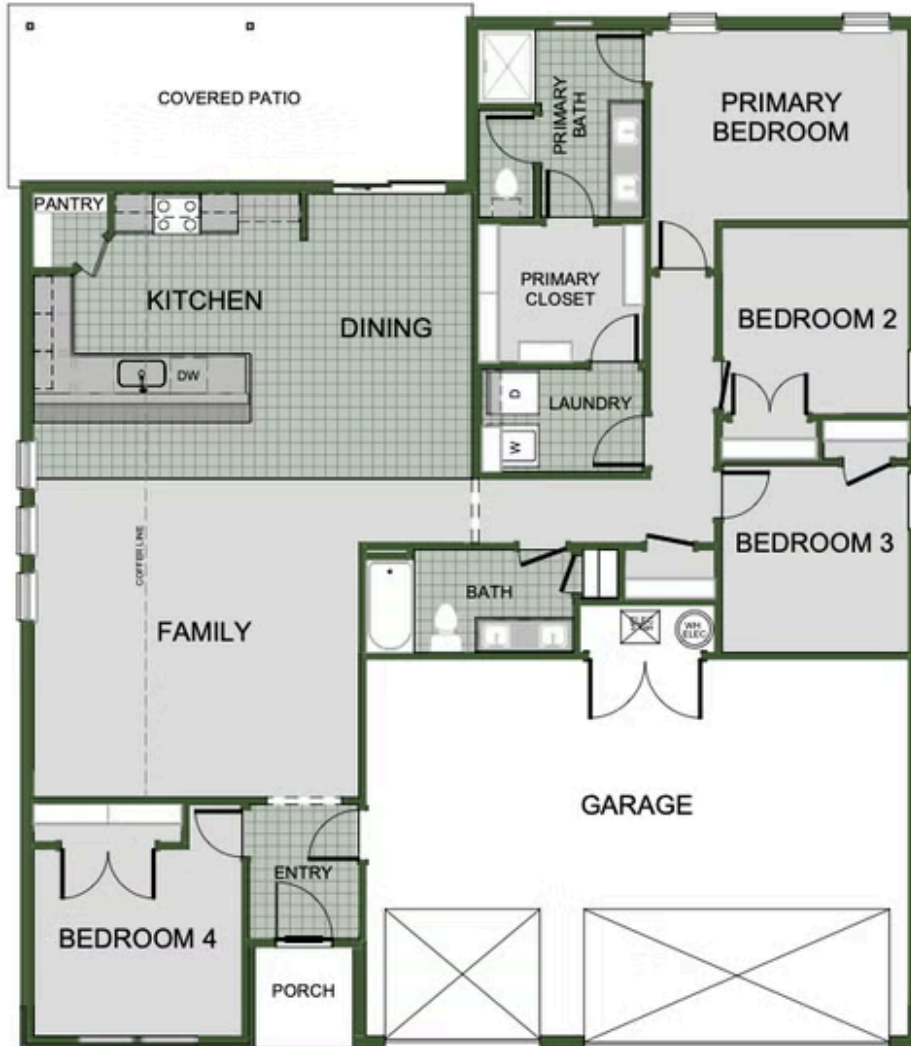


WALKING  
TRAIL

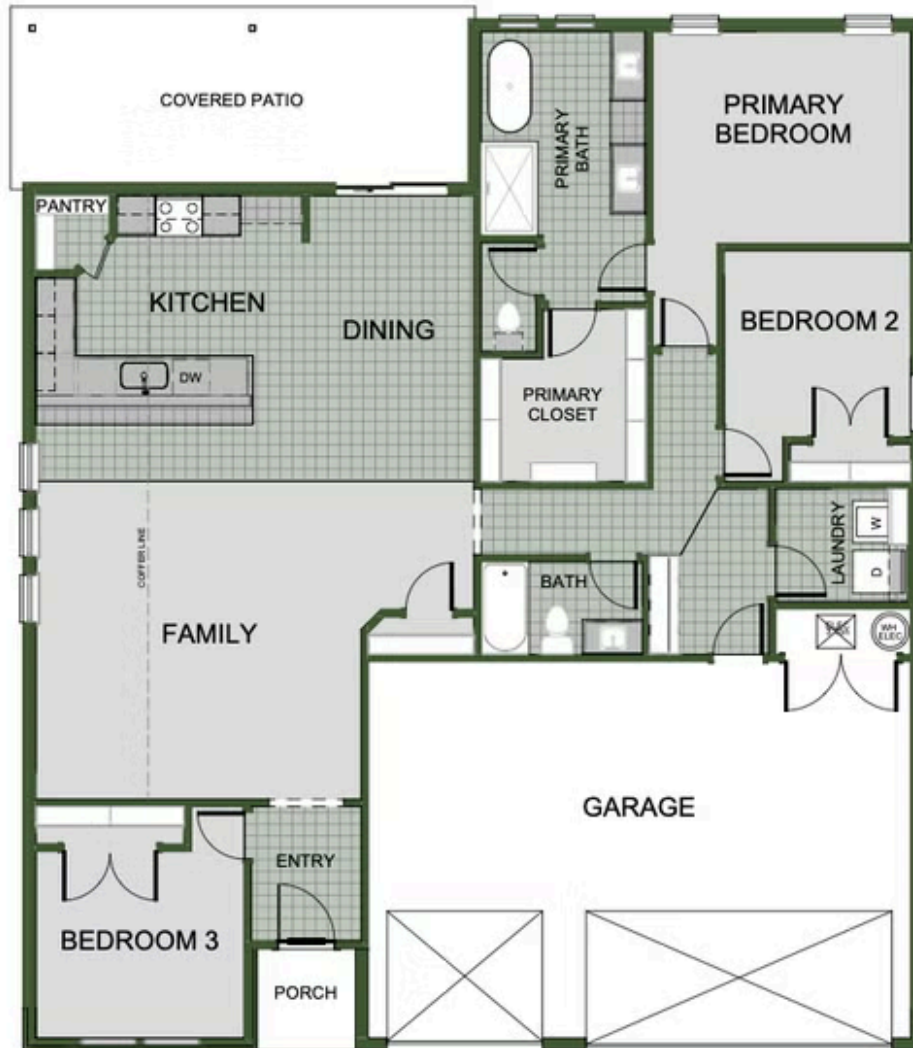


PARK





4 BEDROOM



3 BEDROOM