



SOUTHWIND TRAIL
2360 Two Story
Floor Plan

STARTING AT **\$323,000** 🛏️ 4 - 5 🚿 2.5 🚗 2 🏠 2,360 FT²

This floor plan boasts 2360 square feet, 4-5 bedrooms, 2.5 bathrooms. This is one of the most versatile floor plans yet! With an option for a loft or a fifth bedroom, a flex space perfect for that home gym or office you've been needing, and an open concept downstairs, this home will fit any family. Check out the sky-high ceilings in the entry, the drop zone coming in fr...

AMENITIES



SIDEWALKS



COMMUNITY
POND



RURAL
DEVELOPMENT
FINANCING



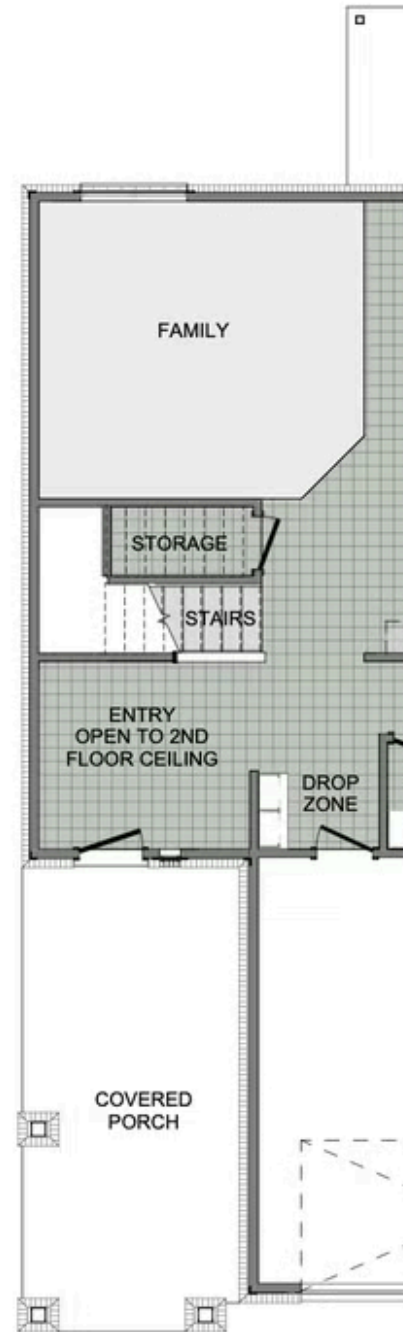
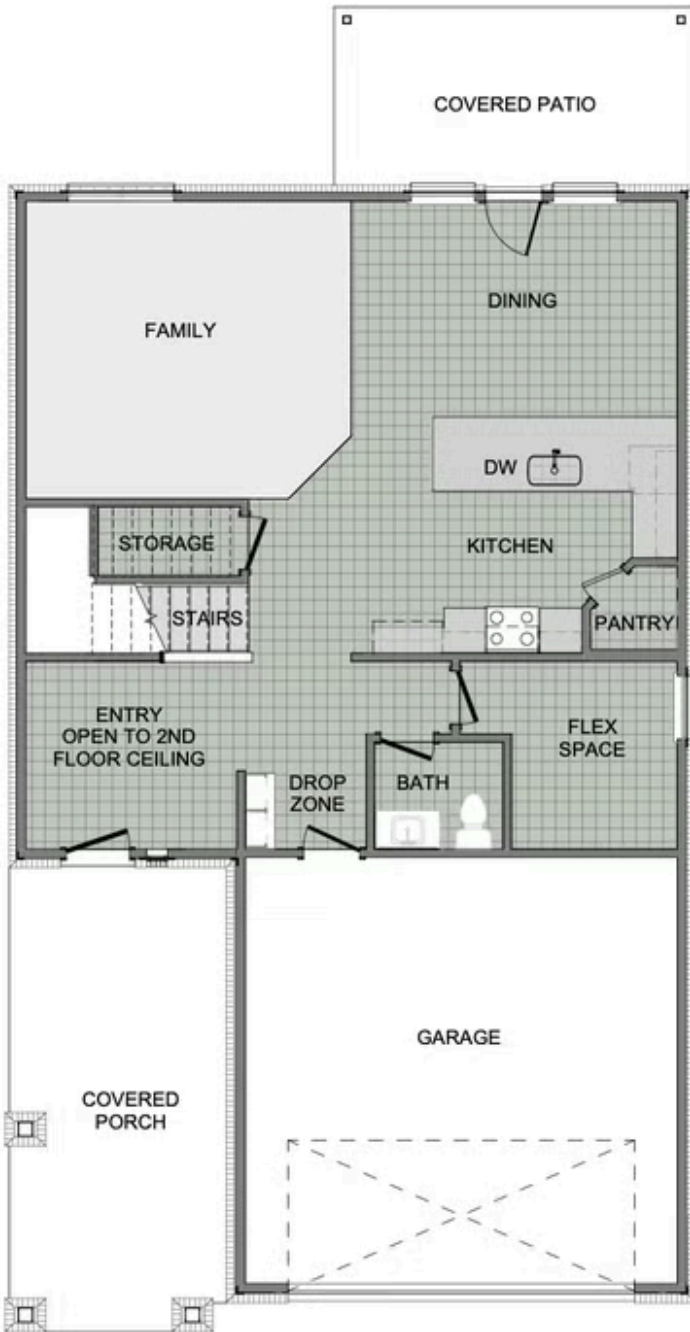
GREENSPACE



WALKING
TRAIL



PARK





1ST FLOOR



2ND FLOOR - LOFT OPTION



2ND FLOOR - 5 BED OPTION