



RIVERTON PARK

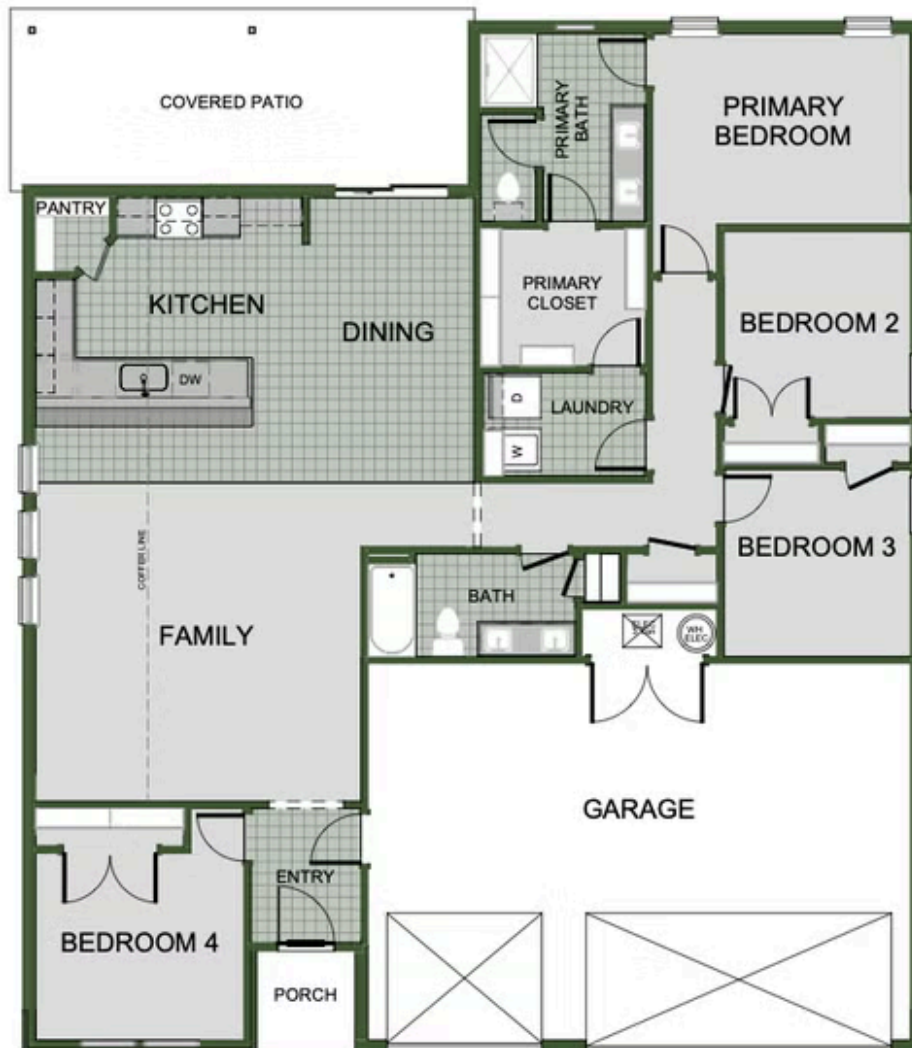
701 N. Baywood Dr.

Nixa, MO 65714

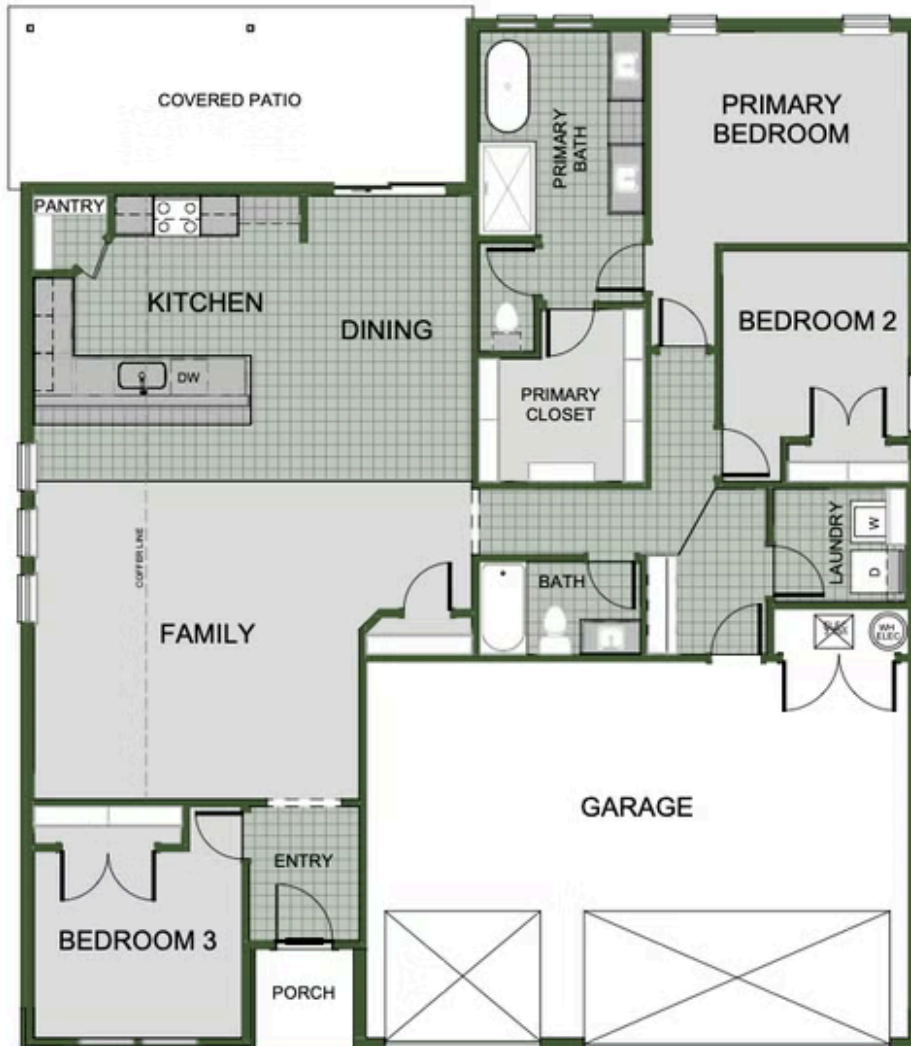
PRICED AT **\$345,504**  3  2.0  3  1750 FT<sup>2</sup>

1750 3 Car : This floor plan is a 3-4 bedroom, 2-bathroom 1750 square feet home featuring 10-foot ceilings in the entryway, kitchen, living area, and primary bedroom, plus dual vanities in the primary bathroom. The 1750 3-Car Series delivers the luxury of a larger floor plan with an included 3rd car garage. Enjoy the flexible floor plan with the choice of 3 or 4 bedroom...





4 BEDROOM



3 BEDROOM