



WYNSTONE

# 1750-4 3-Car

Floor Plan

STARTING AT **\$306,000**  4  2  3  1,750 FT<sup>2</sup>

1750 3 Car : This floor plan is a 3-4 bedroom, 2-bathroom 1750 square feet home featuring 10-foot ceilings in the entryway, kitchen, living area, and primary bedroom, plus dual vanities in the primary bathroom. The 1750 3-Car Series delivers the luxury of a larger floor plan with an included 3rd car garage. Enjoy the flexible floor plan with the choice of 3 or 4 bedroom...

## AMENITIES



POOL

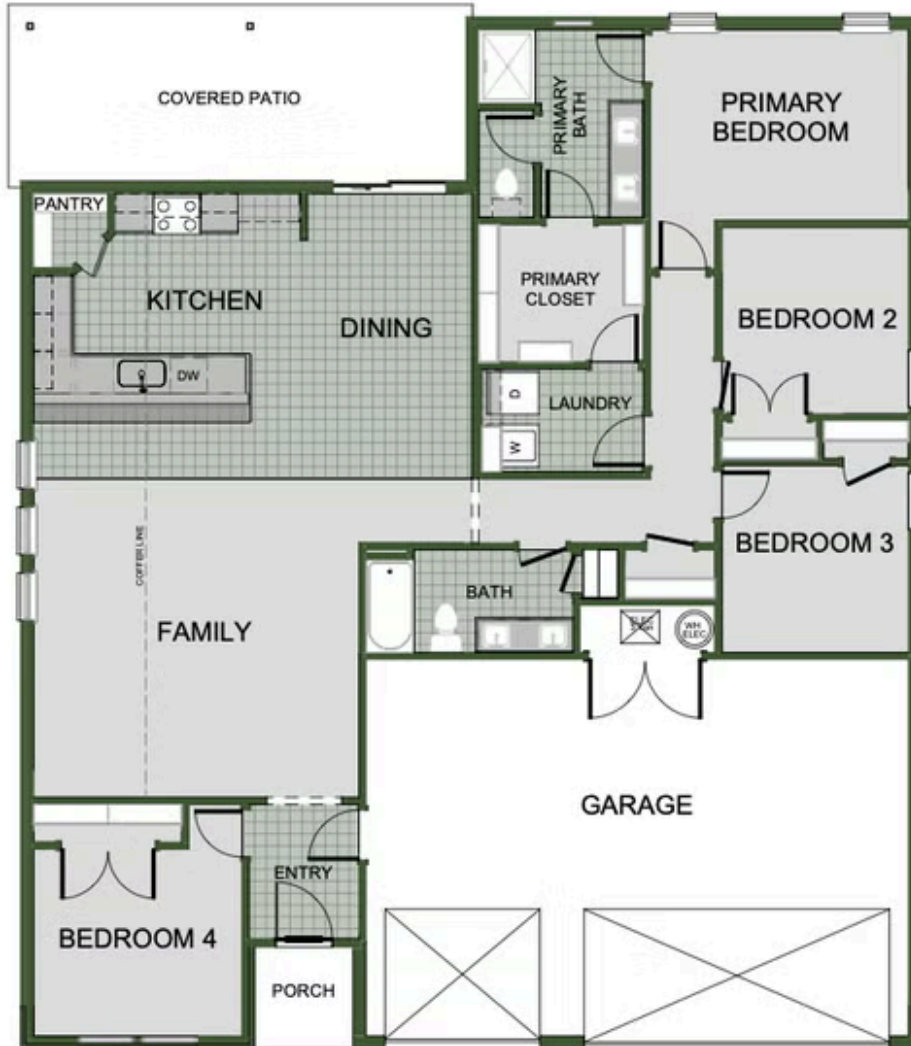


SIDEWALKS



COMMUNITY  
POND





4TH BEDROOM