



WYNSTONE

2575

Floor Plan

STARTING AT **\$389,000**  5  3  2  2,572 FT<sup>2</sup>

The 2575 floorplan features a 4 to 5 bedroom, 3-bathroom with over 2,500 square feet of living space. This premium floorplan is designed to elevate your living experience with its exceptional features and thoughtful design. Step into a home with impressive 15' high vaulted ceilings, complemented by a stylish stained box beam, and 8' tall front and back doors that enhanc...

#### AMENITIES



POOL

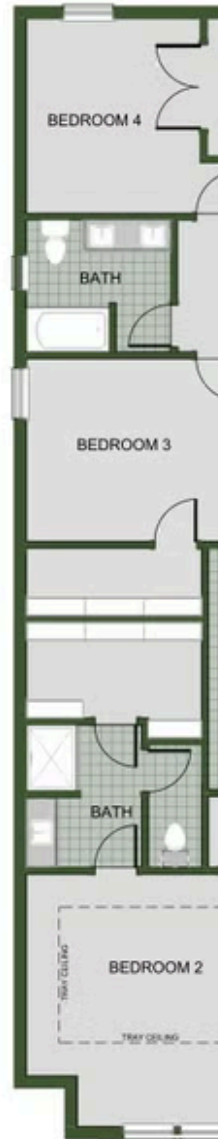


SIDEWALKS



COMMUNITY  
POND





## 2ND MASTER SUITE

