



FRAZIER MEADOWS
1750-4 3-Car
Floor Plan

STARTING AT **\$329,000** 4 2 3 1,750 FT²

We're thrilled to introduce the stunning 1750-4 3-Car Series, a versatile and luxurious 3-4 bedroom, 2-bathroom home that perfectly blends elegance and functionality. Spanning 1750 square feet, this home features impressive 10-foot ceilings in the entryway, kitchen, living area, and primary bedroom, creating an airy and spacious ambiance throughout.

Step inside...

AMENITIES



POOL



COMMUNITY
POND



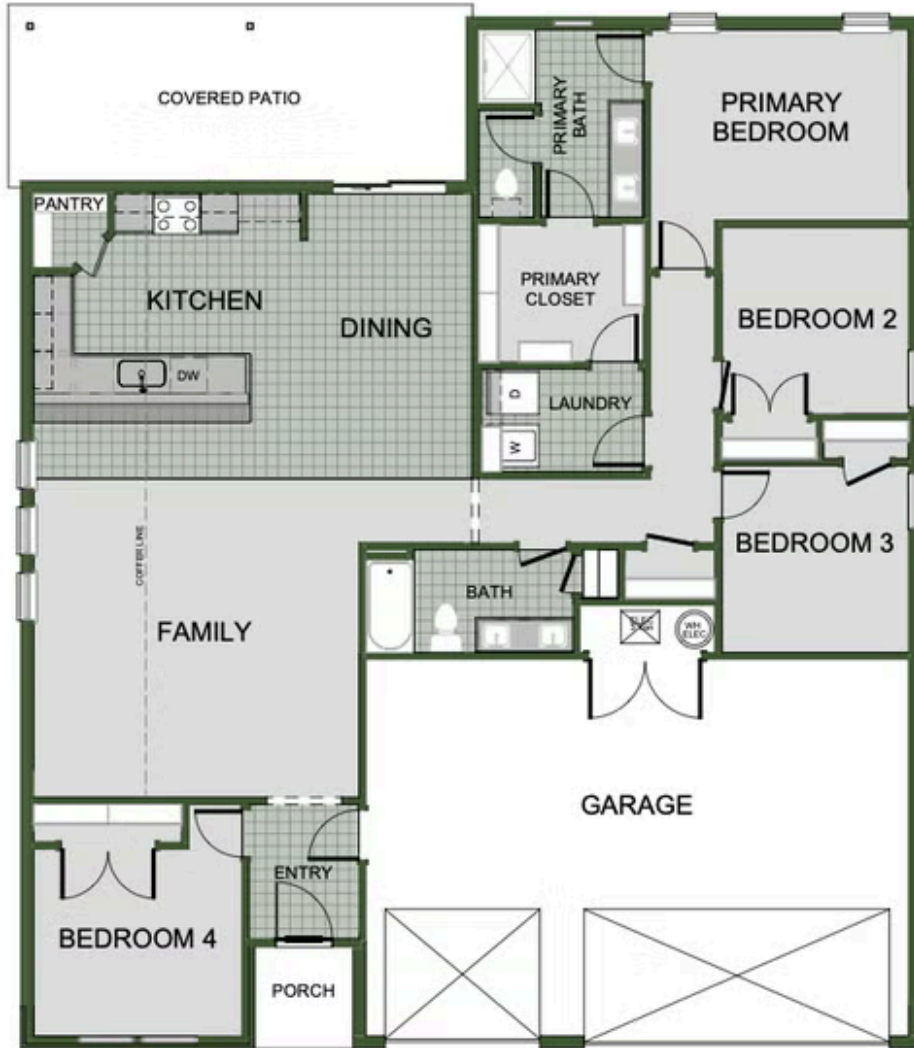
WALKING
TRAIL



PARK



PICKLEBALL
COURTS



4TH BEDROOM