



STARTING AT **\$341,000** 🛏 3 - 4 🚿 2.5 - 3 🚗 2 📏 2,000 FT<sup>2</sup>

Introducing our 2000 Two Story this 3 - 4 bedroom, 2.5 to 3.5 bathroom with 1979 square foot home is the epitome of versatility for your family's needs! This floor plan offers an open-concept layout on the ground floor, with options for an upstairs loft, a fourth bedroom, or even a bedroom en-suite. Discover a home that adapts to your lifestyle with the 2000 Two Story –...

**AMENITIES**



POOL



COMMUNITY  
POND



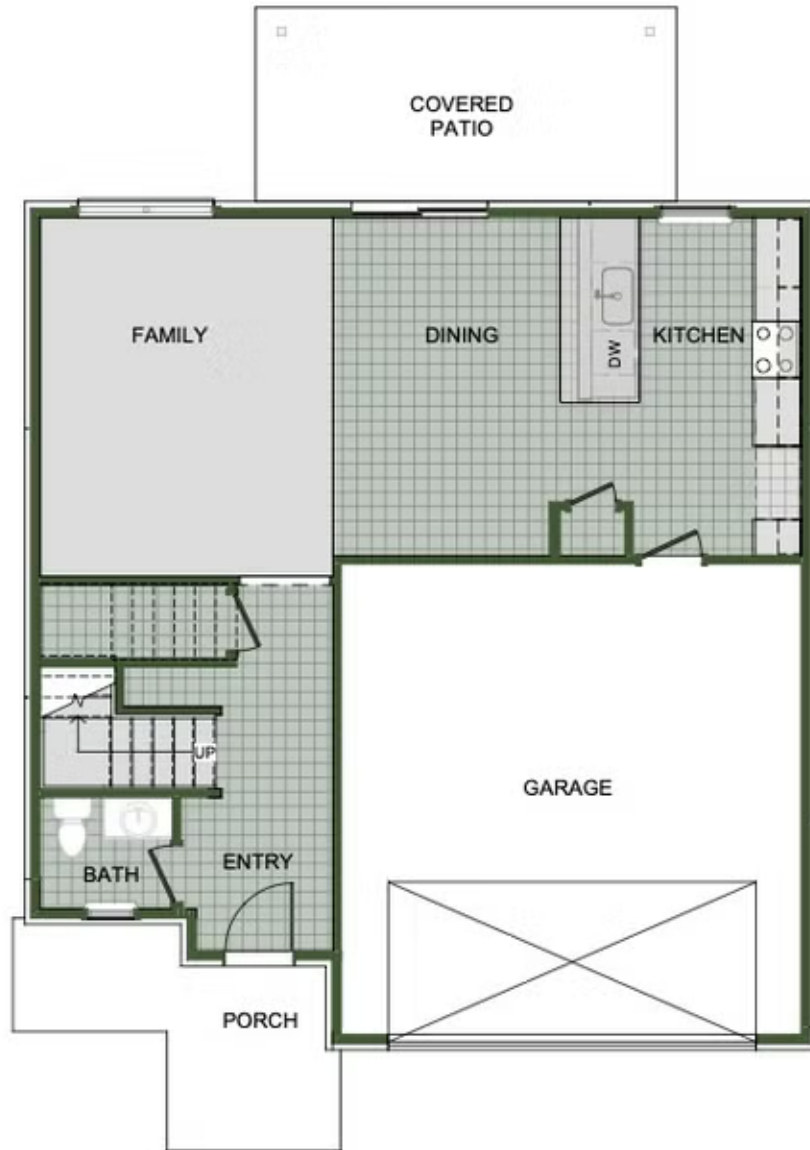
WALKING  
TRAIL



PARK



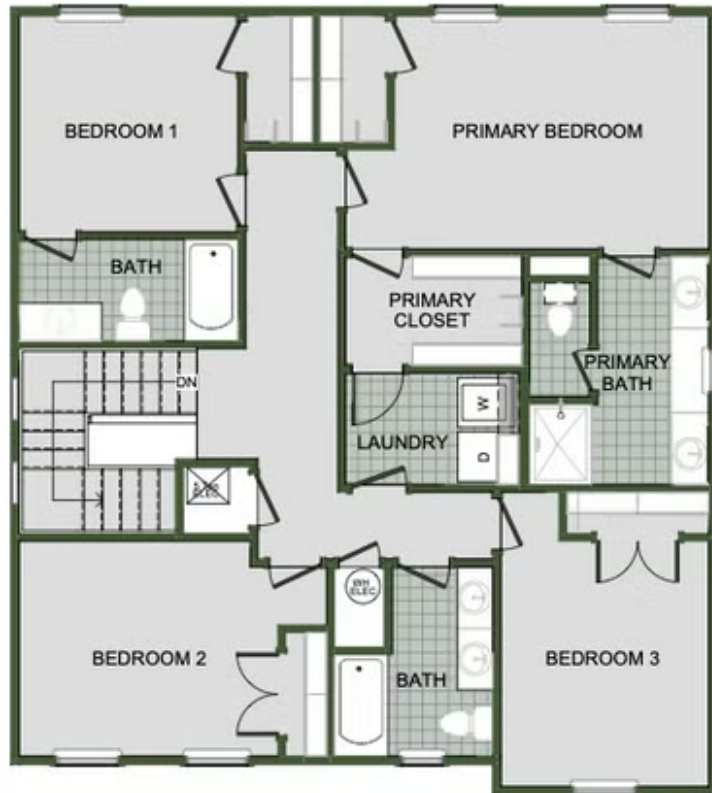
PICKLEBALL  
COURTS



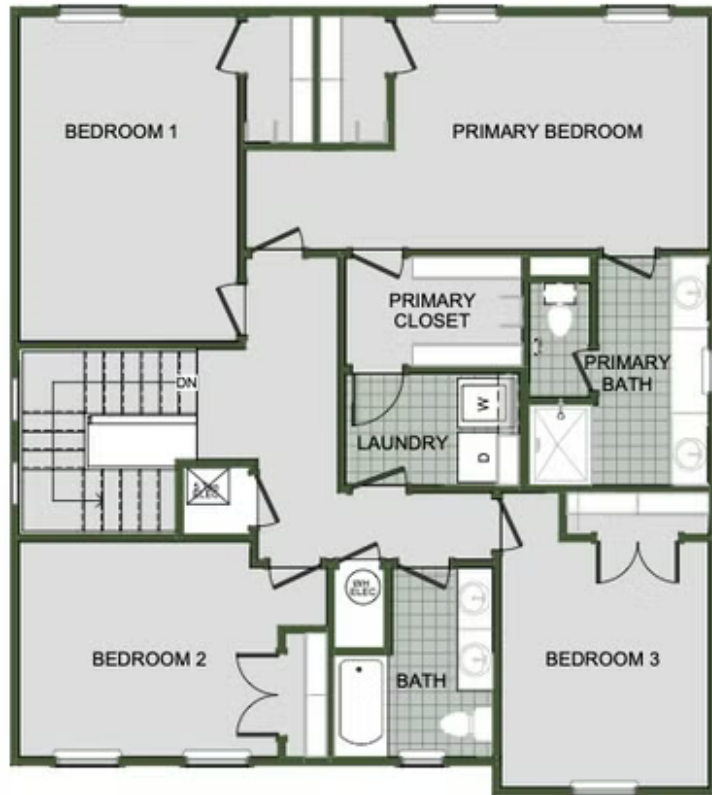
FIRST FLOOR



LOFT OPTION



4 BEDROOM EN-SUITE OPTION



4 BEDROOM OPTION